

EXPO OSAKA — 2025

Applied research project for the exhibition pavilion
of the Republic of San Marino at Expo Osaka 2025

State Secretariat for Tourism
with delegation to the Expo
Secretary Federico Pedini Amati
Commissioner Doctor Filippo Francini

Project organized by the University of the Republic of San Marino
Rector Professor Corrado Petrocelli
General Manager Doctor Laura Gobbi

Scientific managers
Elena Brigi, Giorgio Dall'Osso, Massimo Brignoni, Riccardo Varini

Coordinators
Massimo Brignoni, Riccardo Varini

Tutor
Pietro Garofalo, Matteo Giustozzi, Nunzia Ponsillo

Students
Roberta D'Onofrio, Sara Manfredotti, Erica Tentoni
Davide Passatempi, Rachele Turci, Rebecca Ugolini
Giada Cianca, Andrea Monticelli, Mattia Pompili, Elena Scarpellini

EXPO —AREA





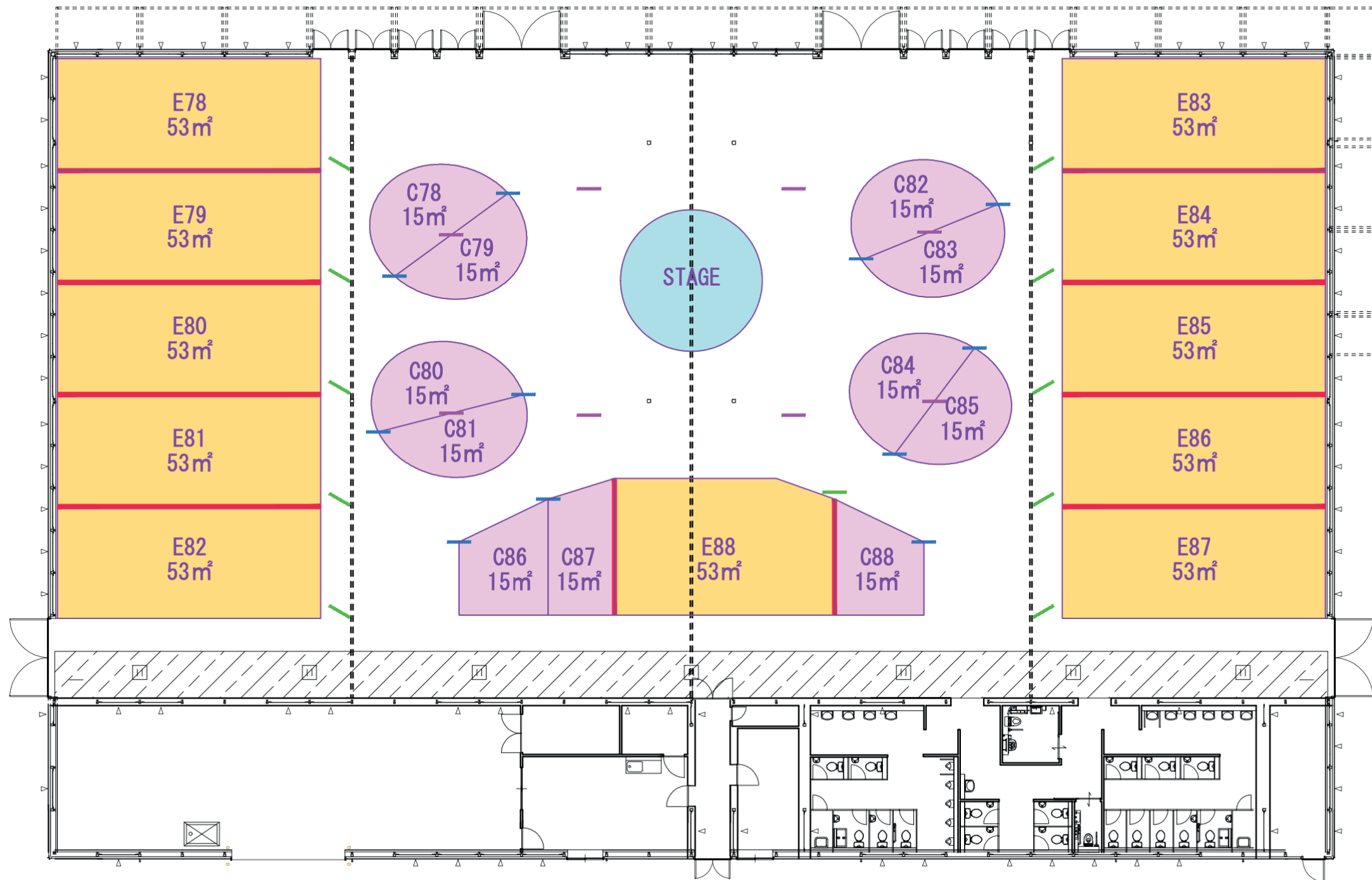


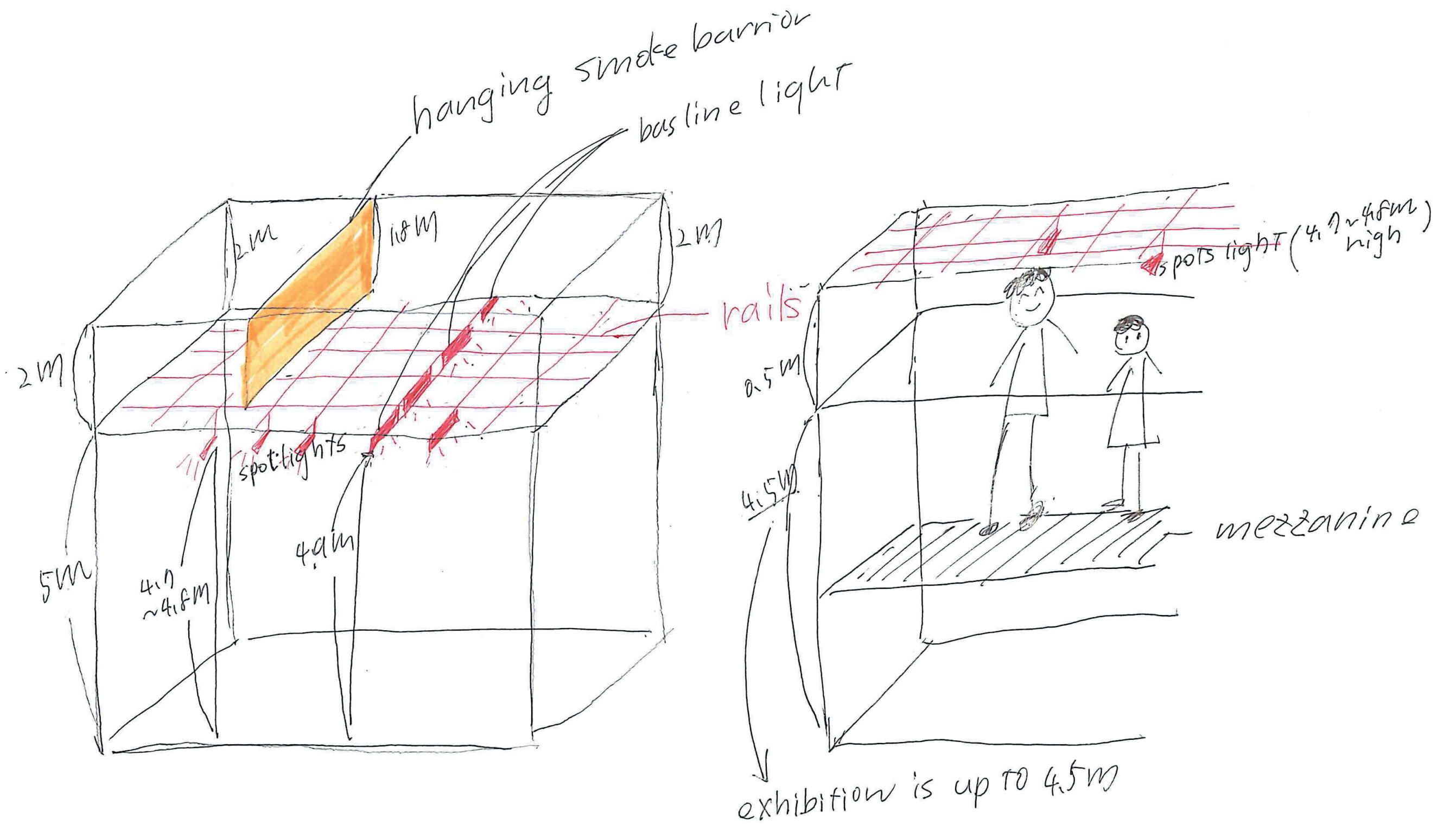
University of the Republic of San Marino
Degree Course in Design
Project for the San Marino pavilion at EXPO OSAKA—25

EXPO AREA



EXPO —PAVILION





EXPANDING HORIZONS: LIFE AND SUSTAINABILITY

- SDG 2030
- Prosperous community
- Vital community
- Human lifestyle

—SOCIAL

urban place, privileged social relationships, on equal terms transversal to roles and levels given by the physicality of the place proximity

—CARE

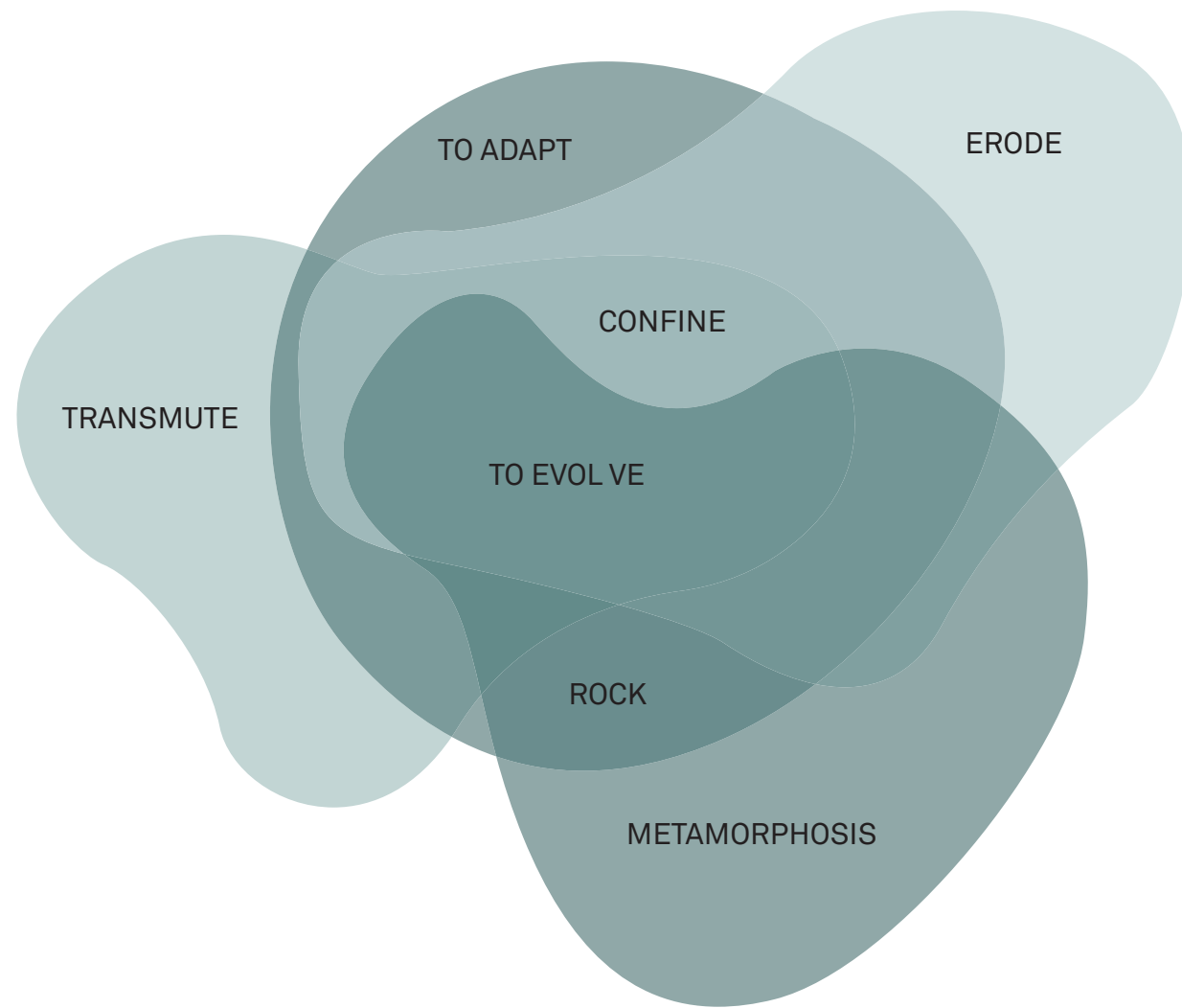
welfare state, socio-medical training services
care for education, health, safety, management of services

—HEALTH

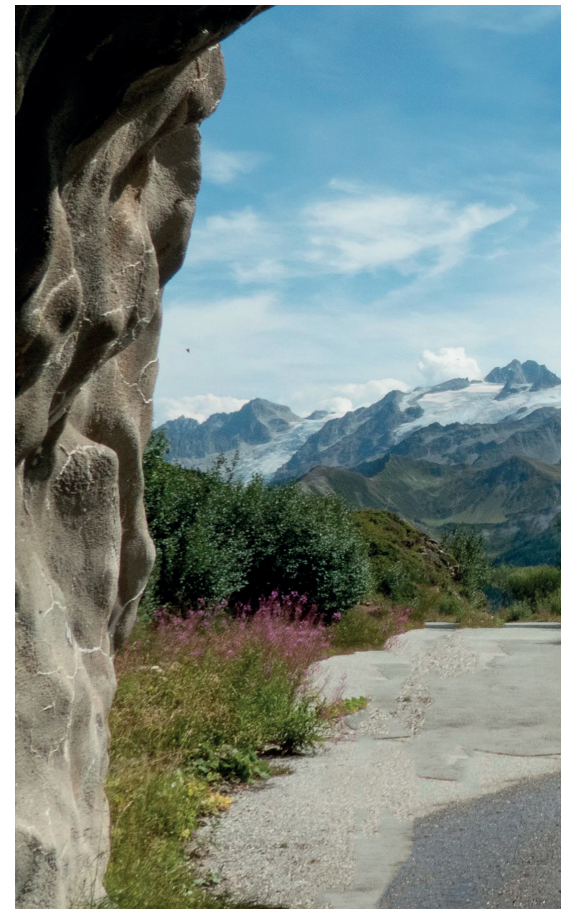
nature and culture, healthy lifestyle, healthy life, elevated territory near the sea in the greenery, hills and Apennines, no smog, the 7 winds, privileged geographical position

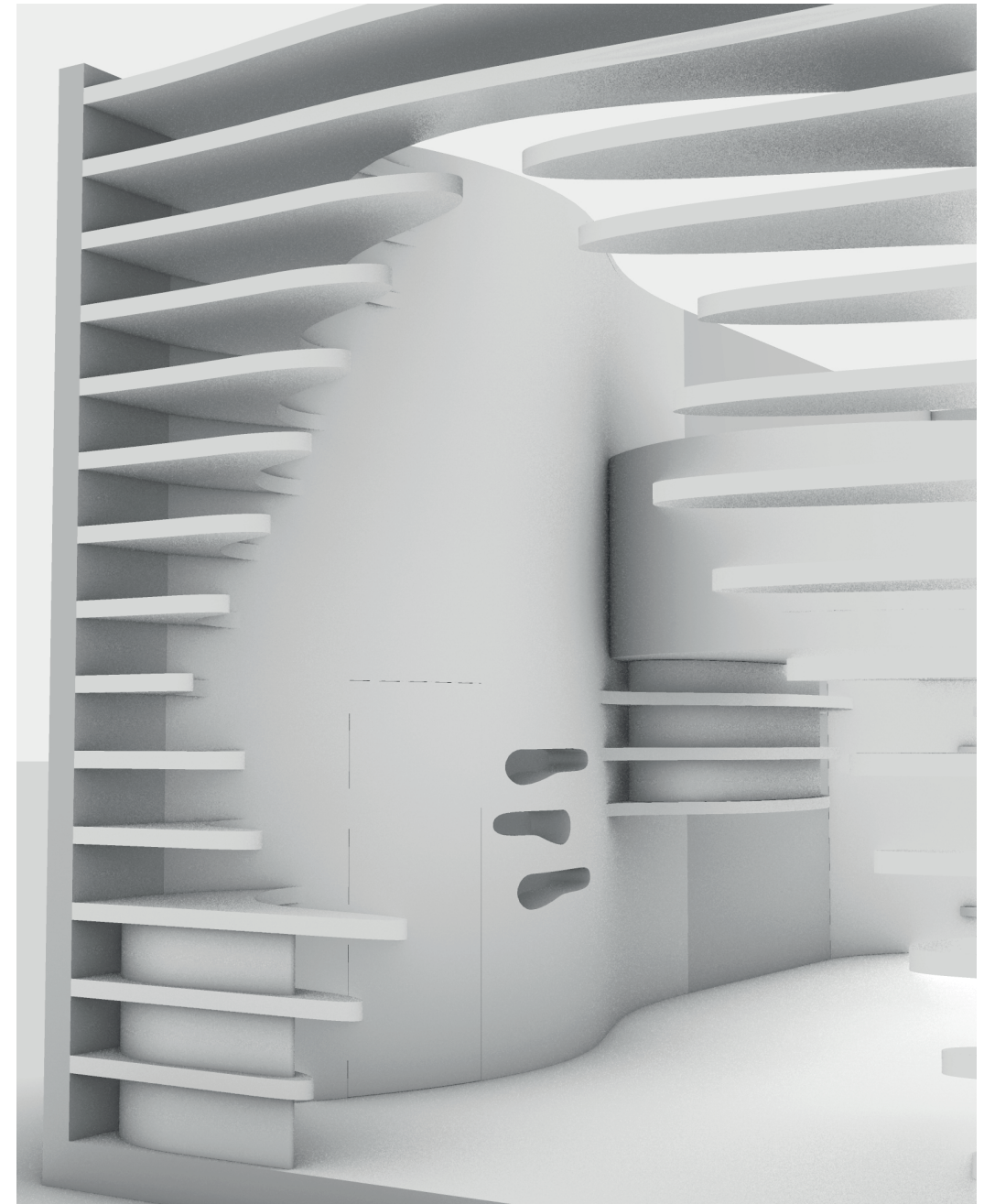
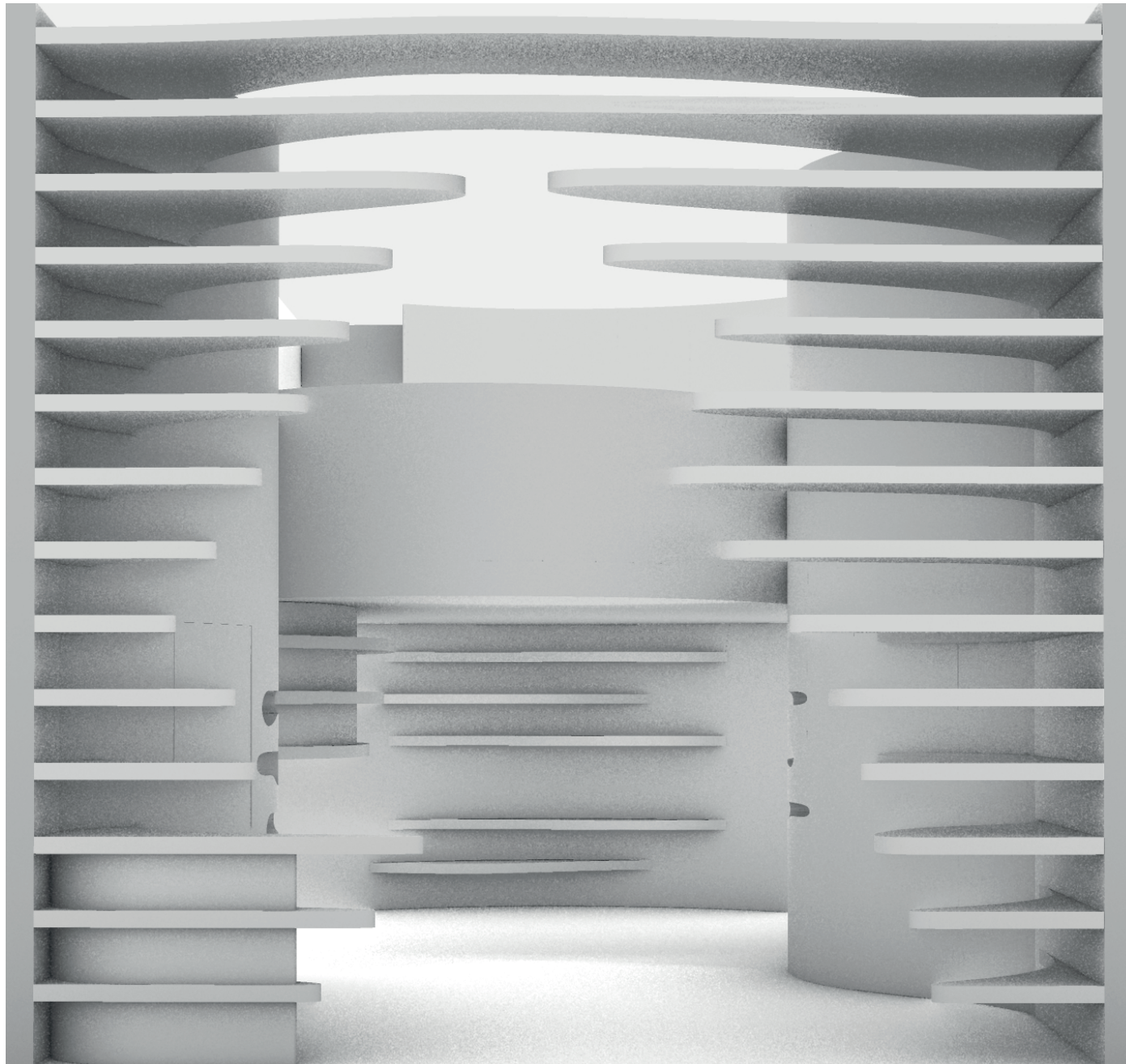
—POLICY

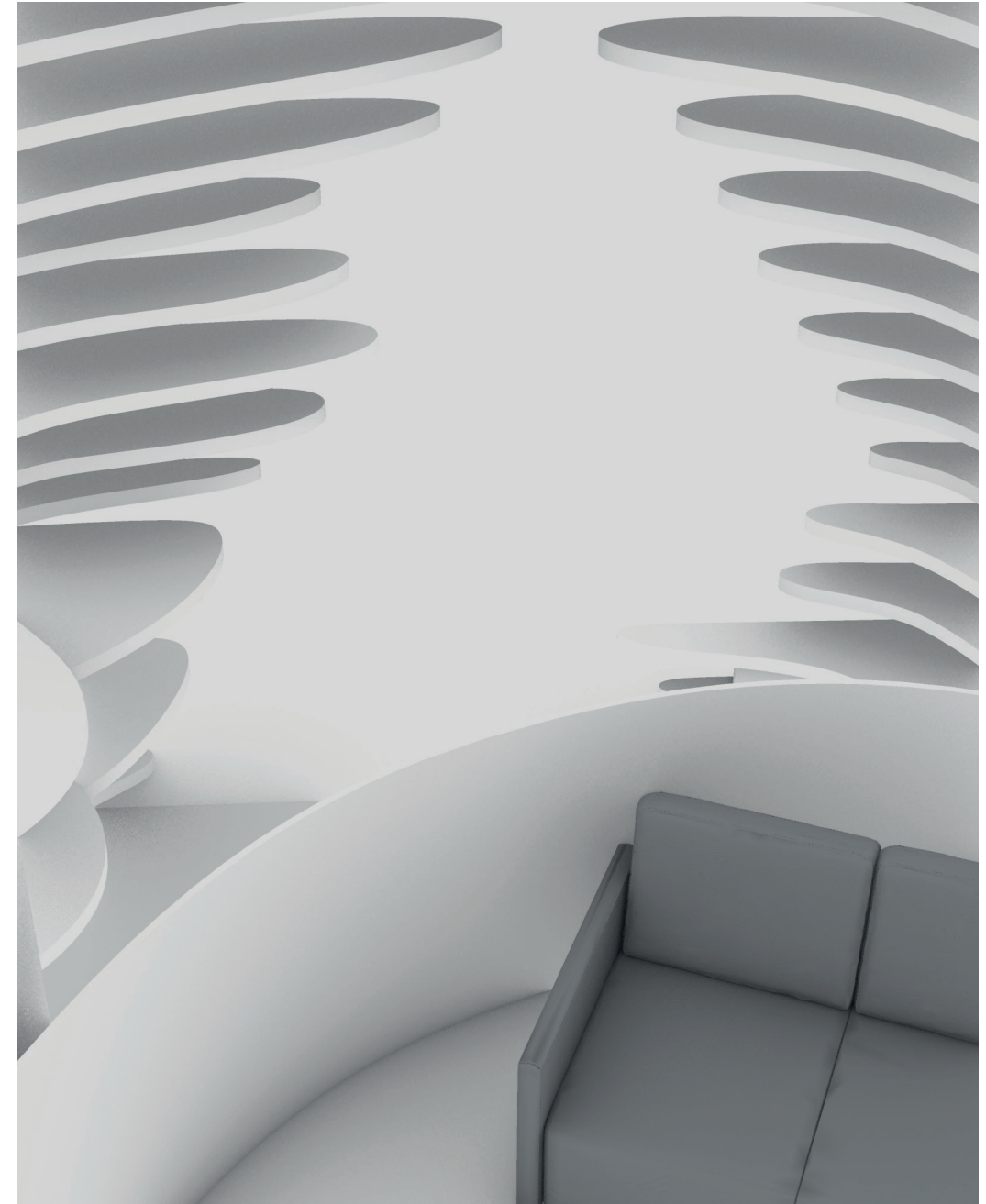
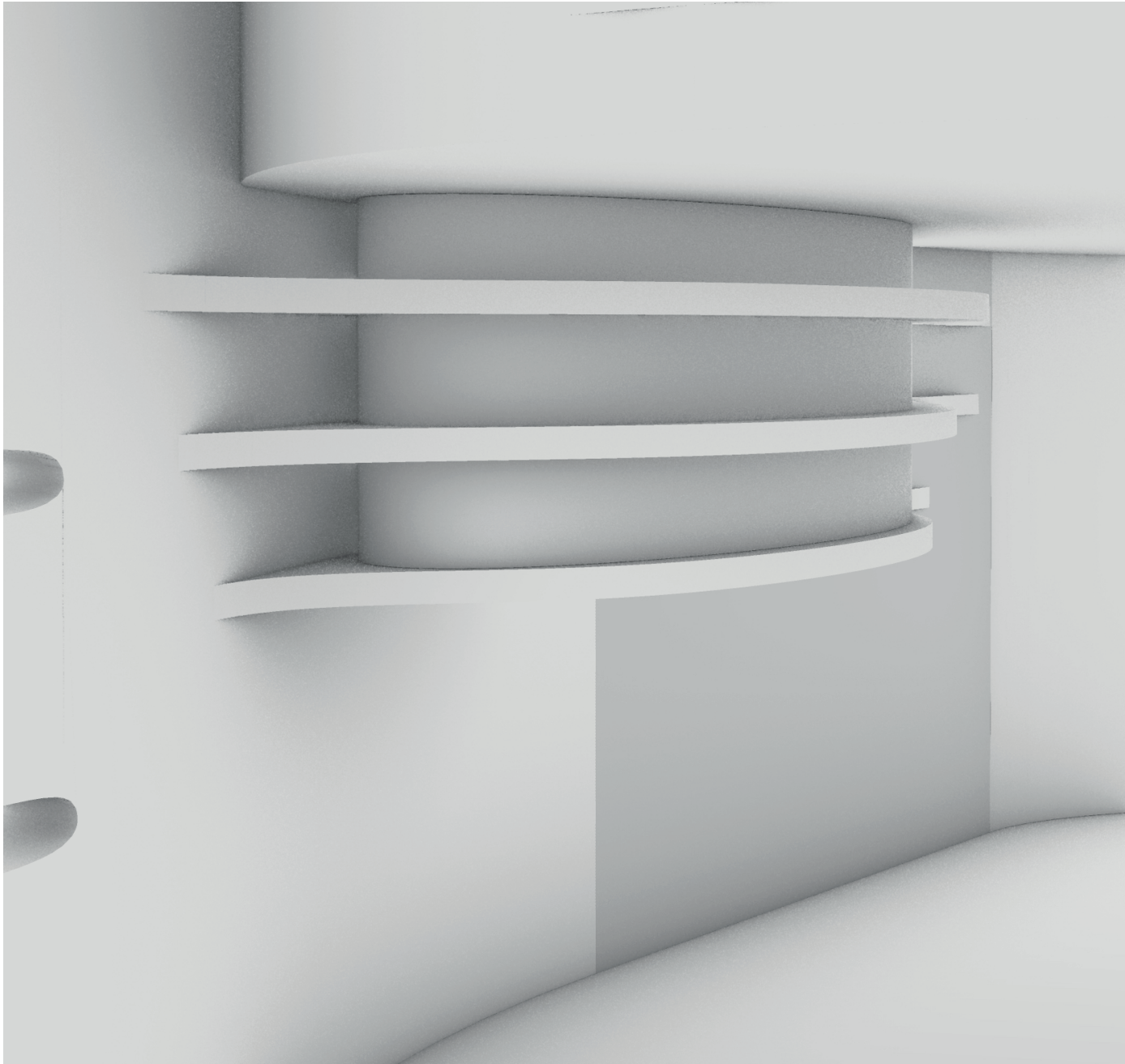
politics, integrating and close institutions, direct participation of citizens in politics, administration and decisions

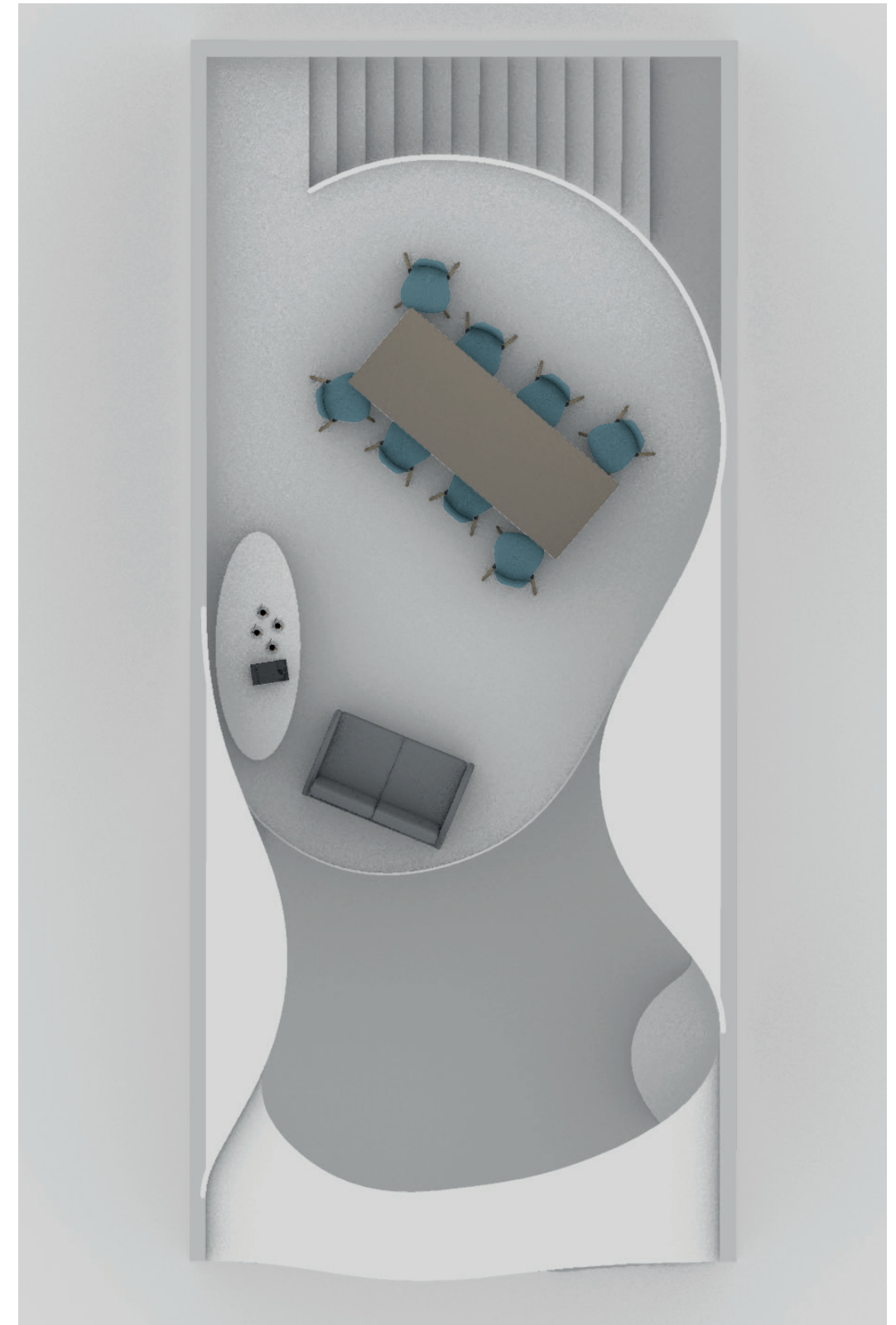
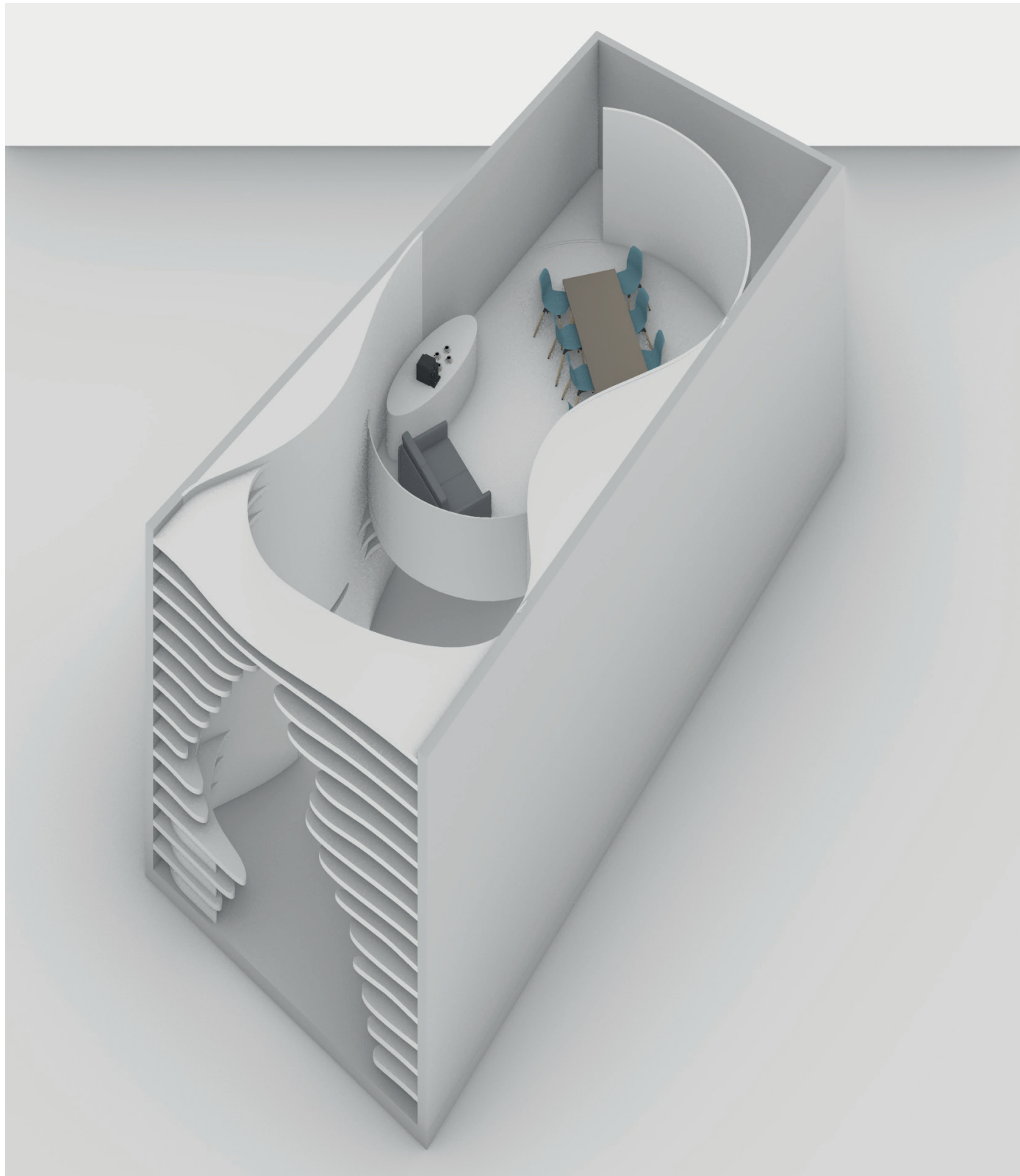


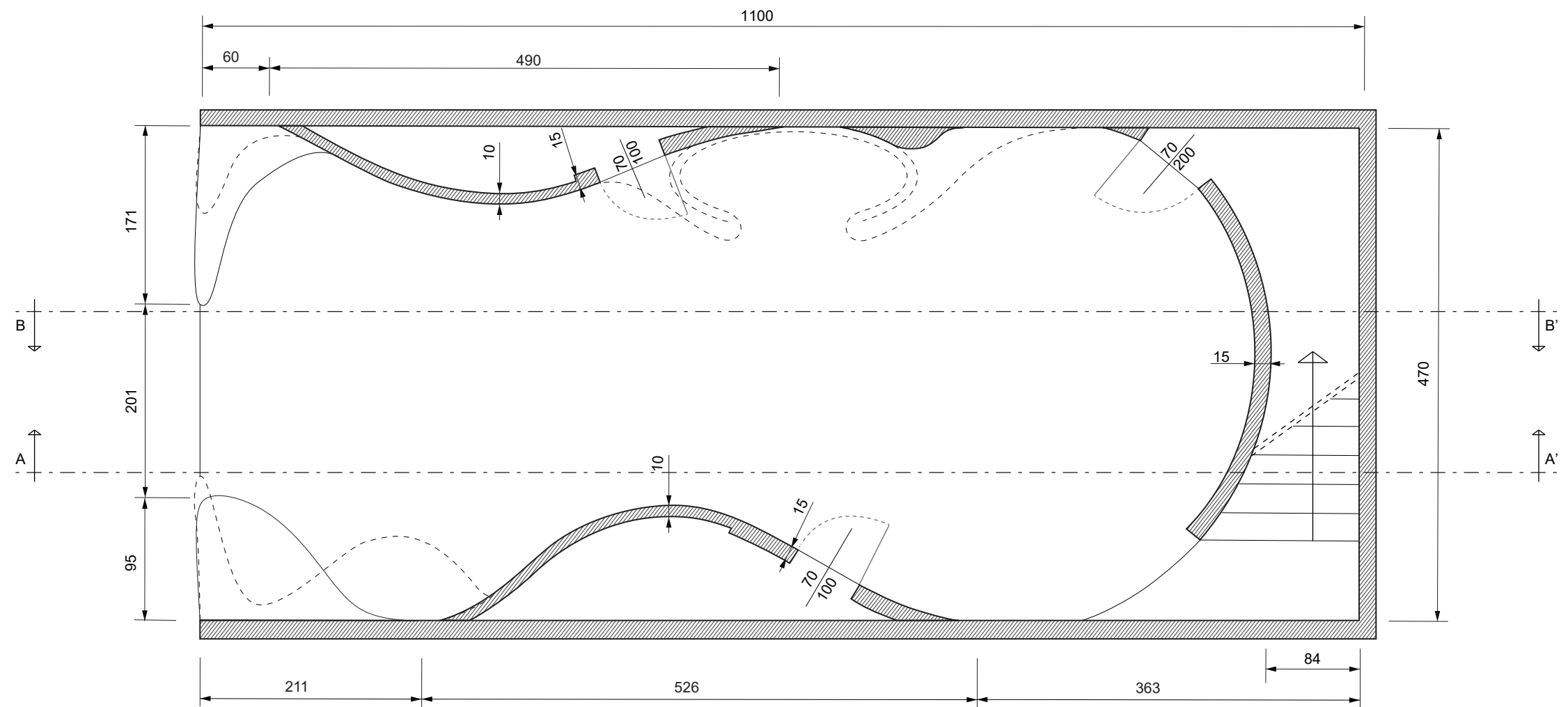
The territory of the Republic of San Marino is characterized by a series of hills and peaks that extend into the central part of the small state. It is located on Mount Titano, which is the main mountain formation in the region and offers spectacular panoramic views of the surrounding lands.

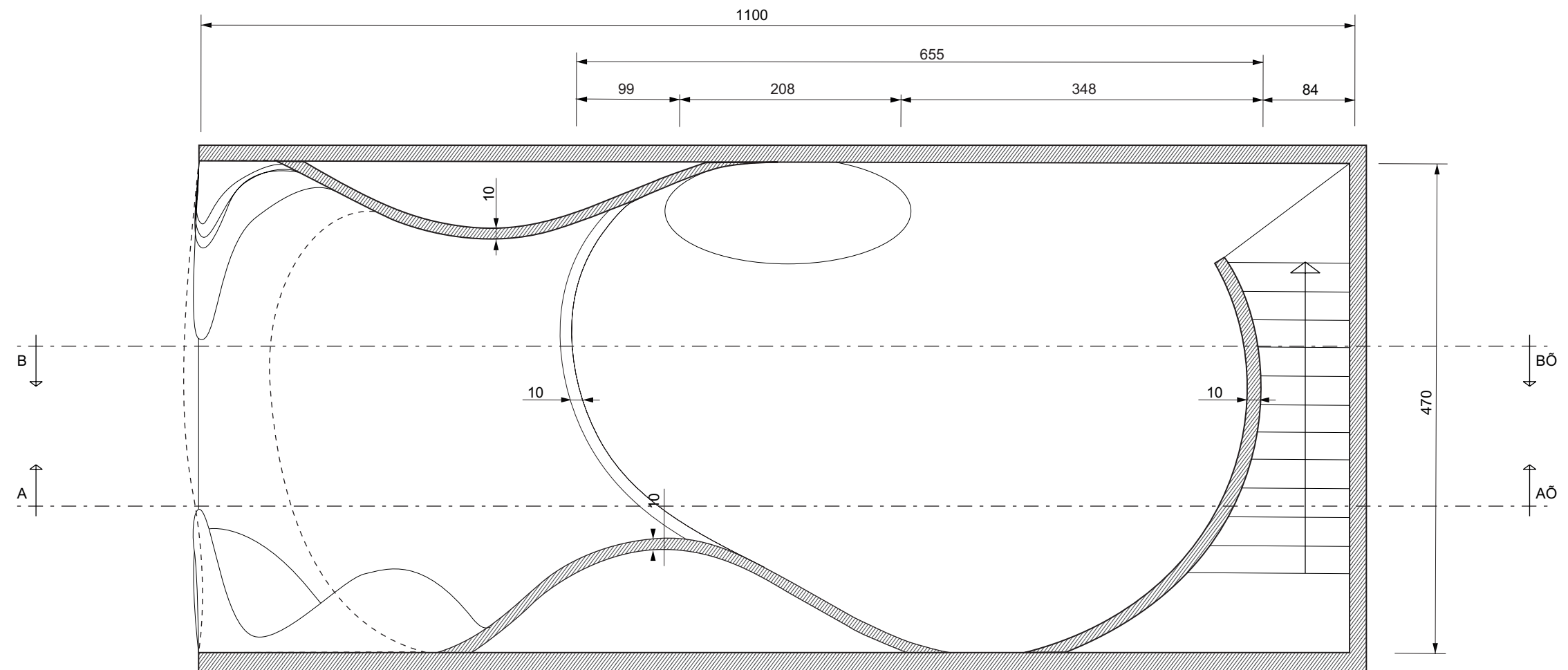


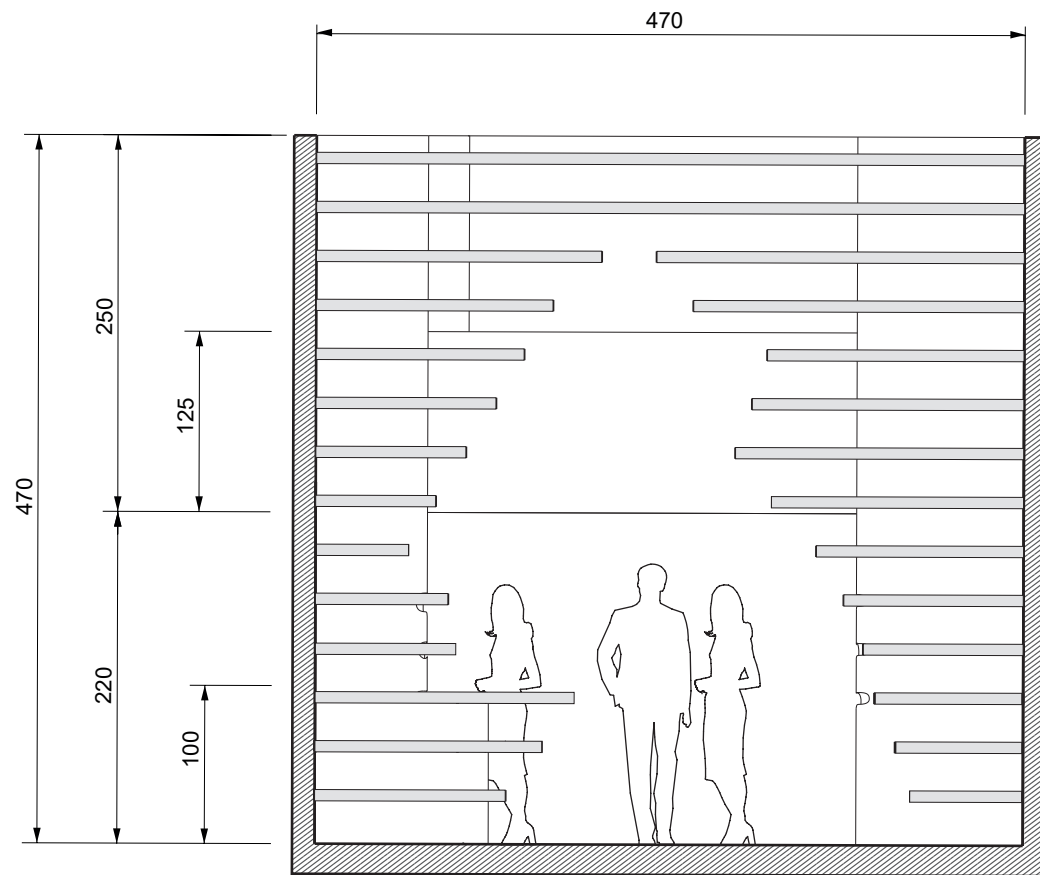




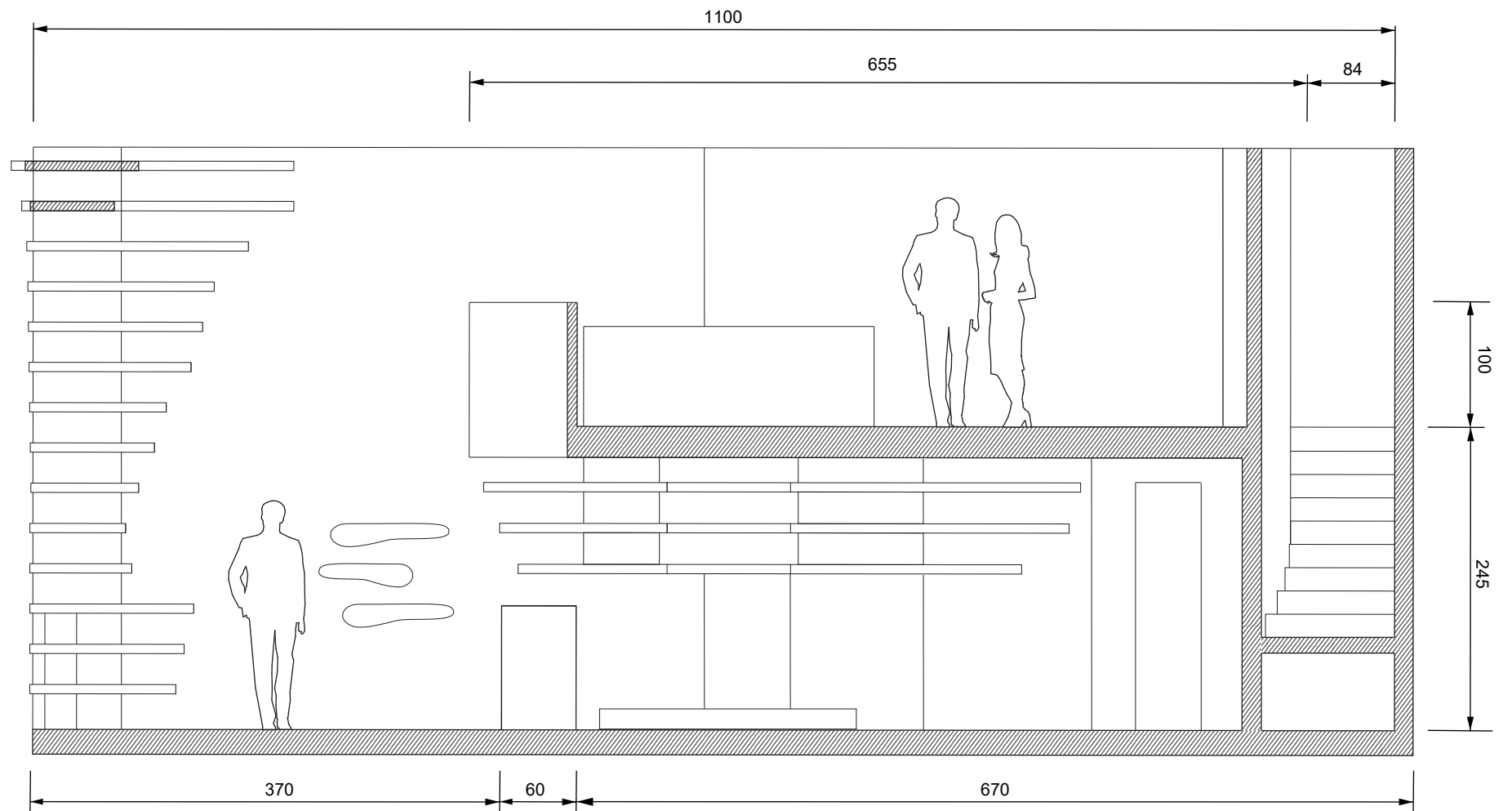


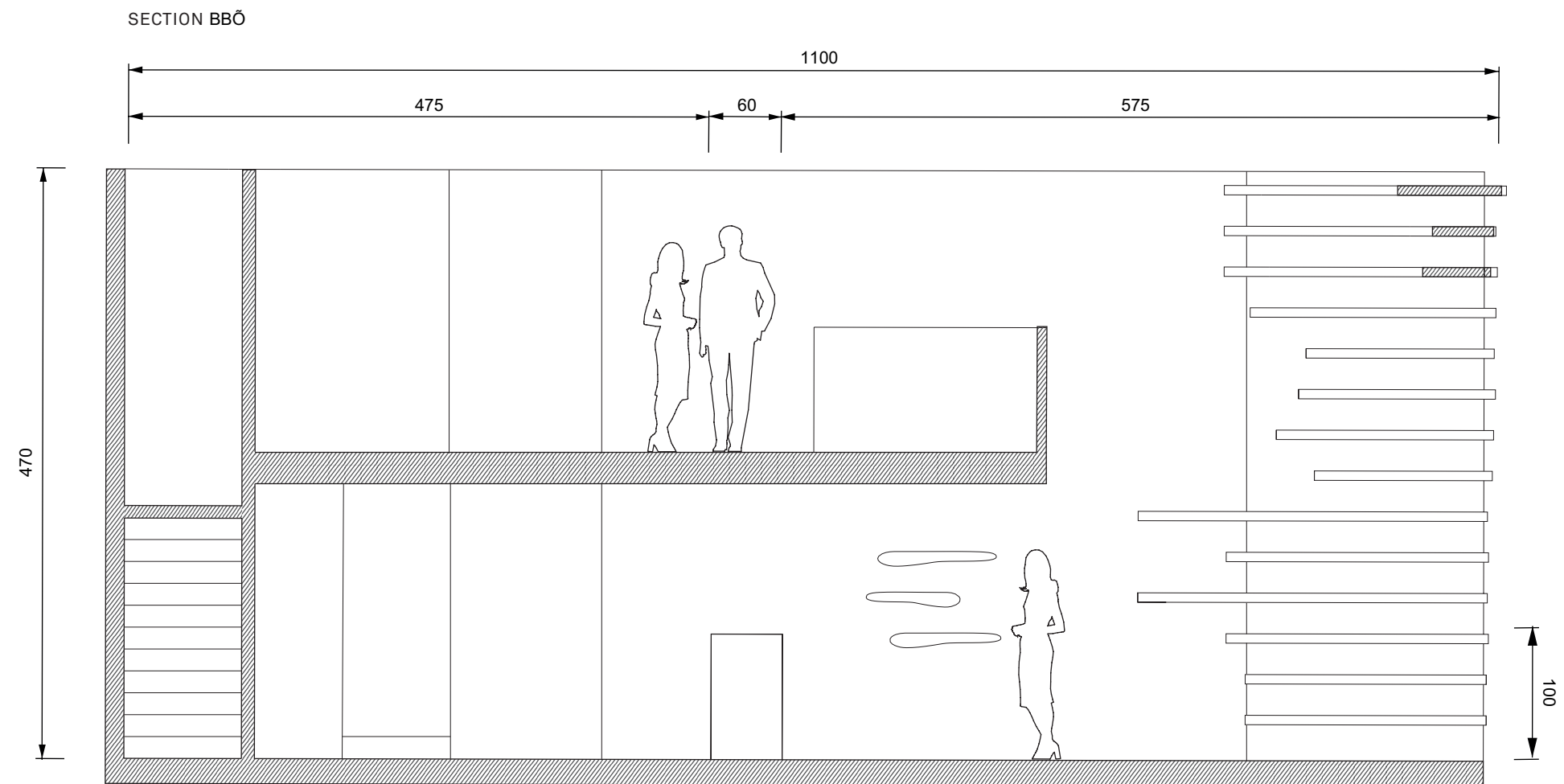






SECTION AA'Ø







LOAD-BEARING WALLS

load-bearing walls on the ground floor, 15 cm thick
(maximum thickness with welded metal tubular structure
+plasterboard or calendered material)



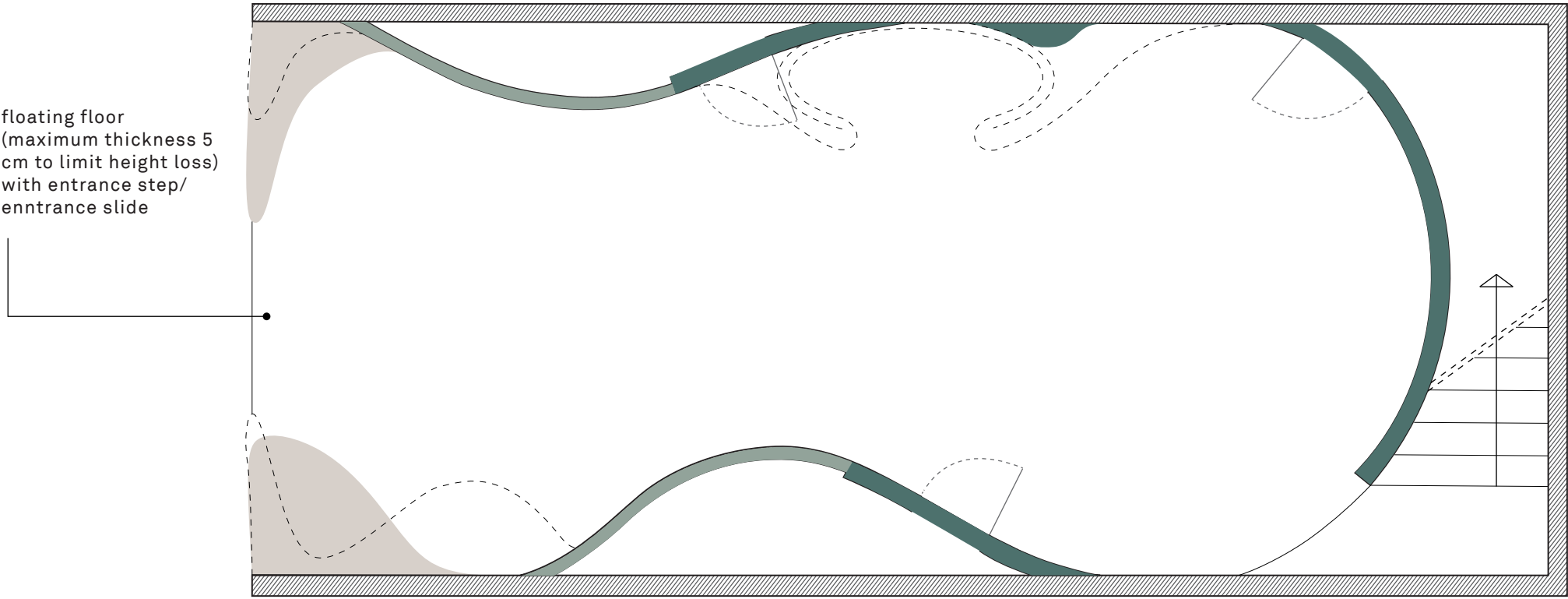
ACCESSORY WALLS

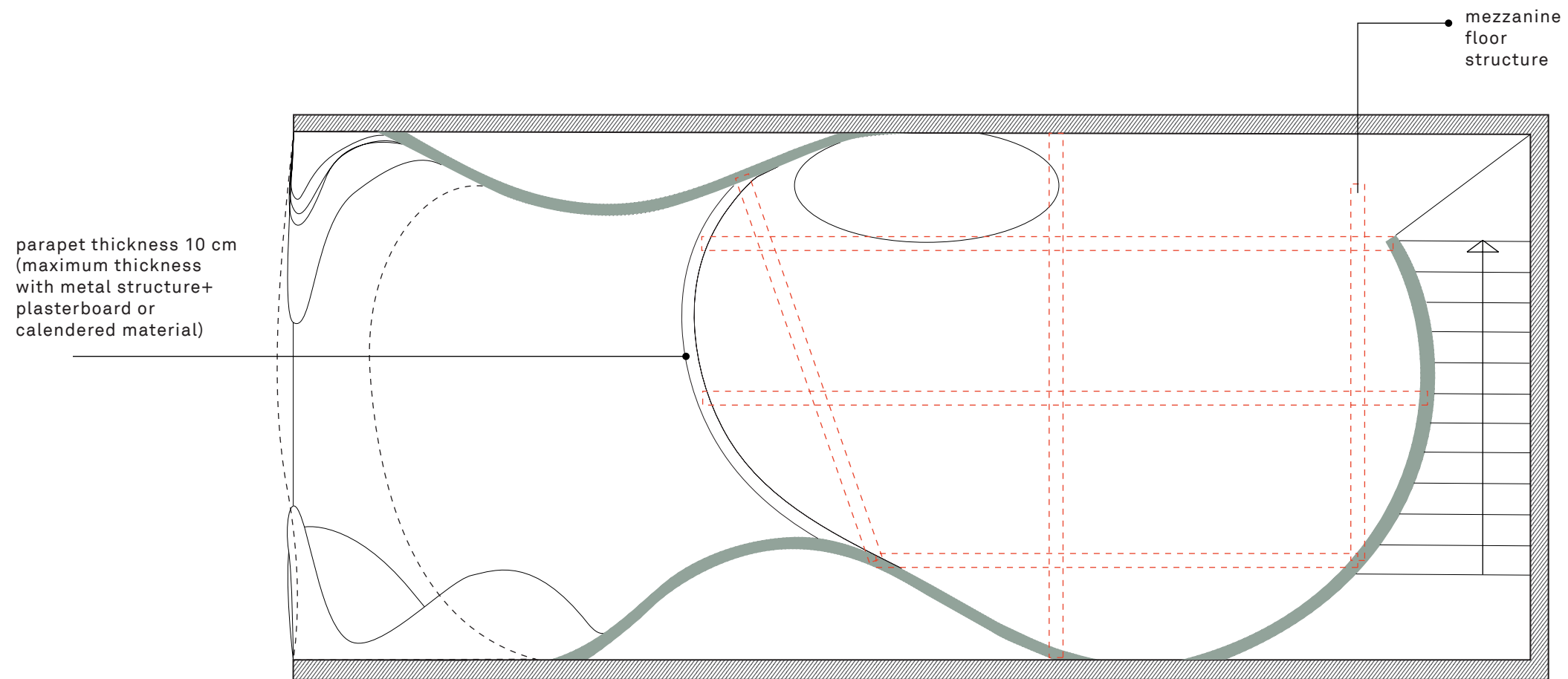
non-load-bearing partitions 10 cm thick
(maximum thickness with metal structure
+plasterboard or calendered material)



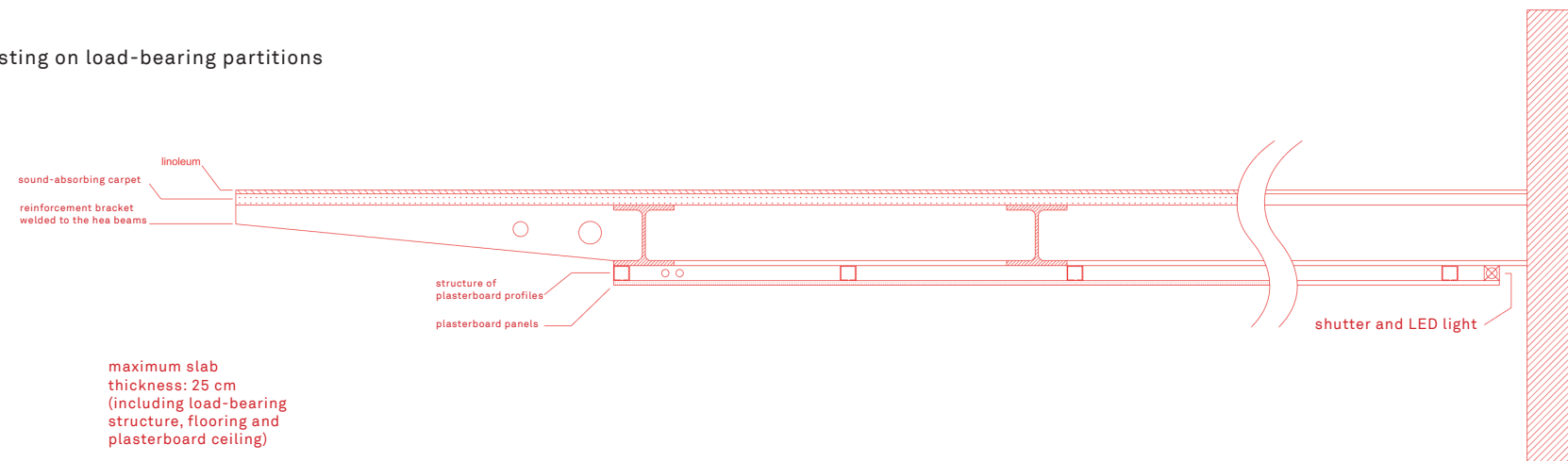
WALL ELEMENTS

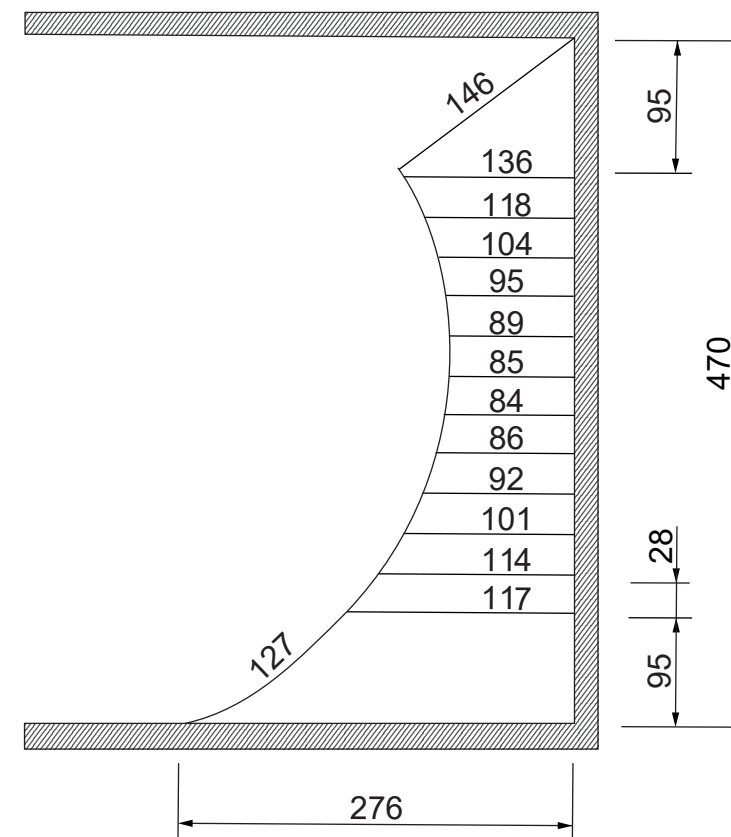
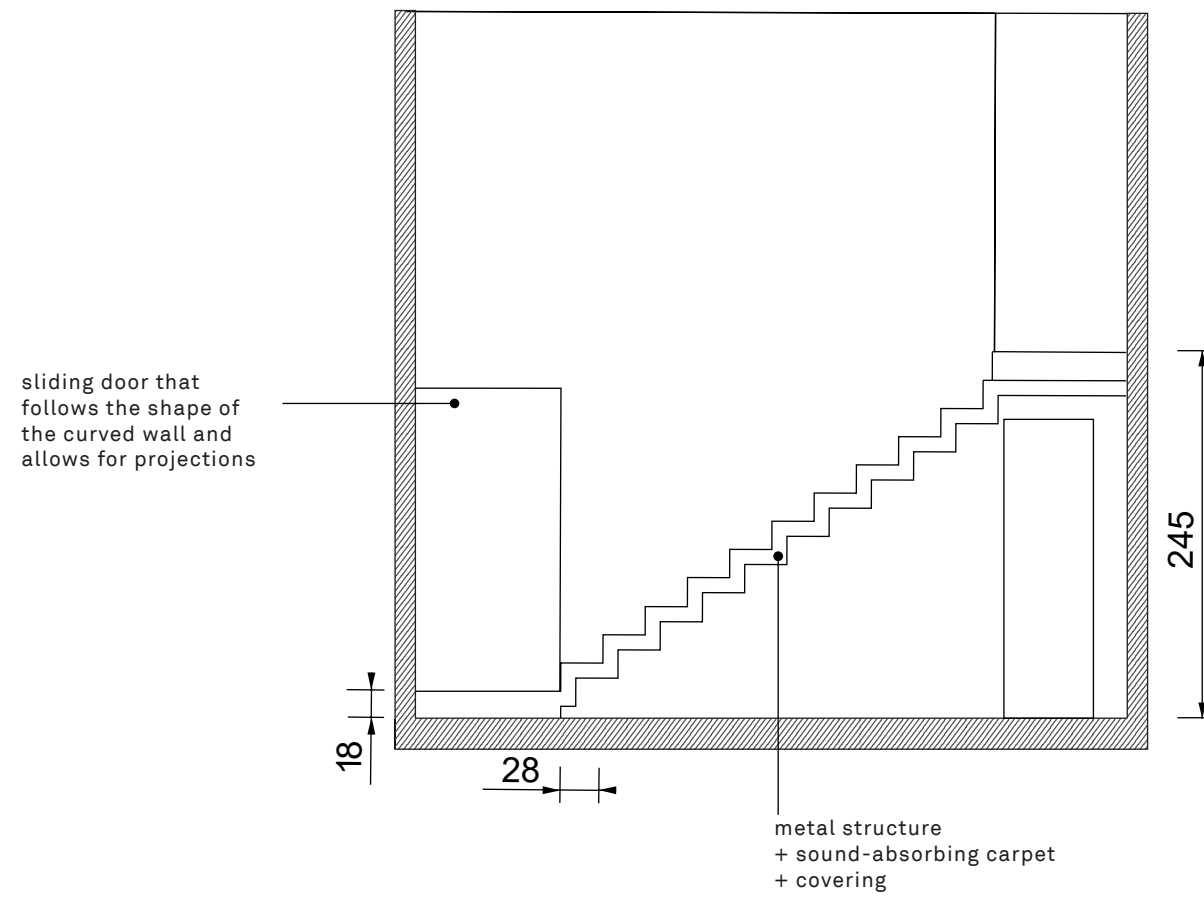
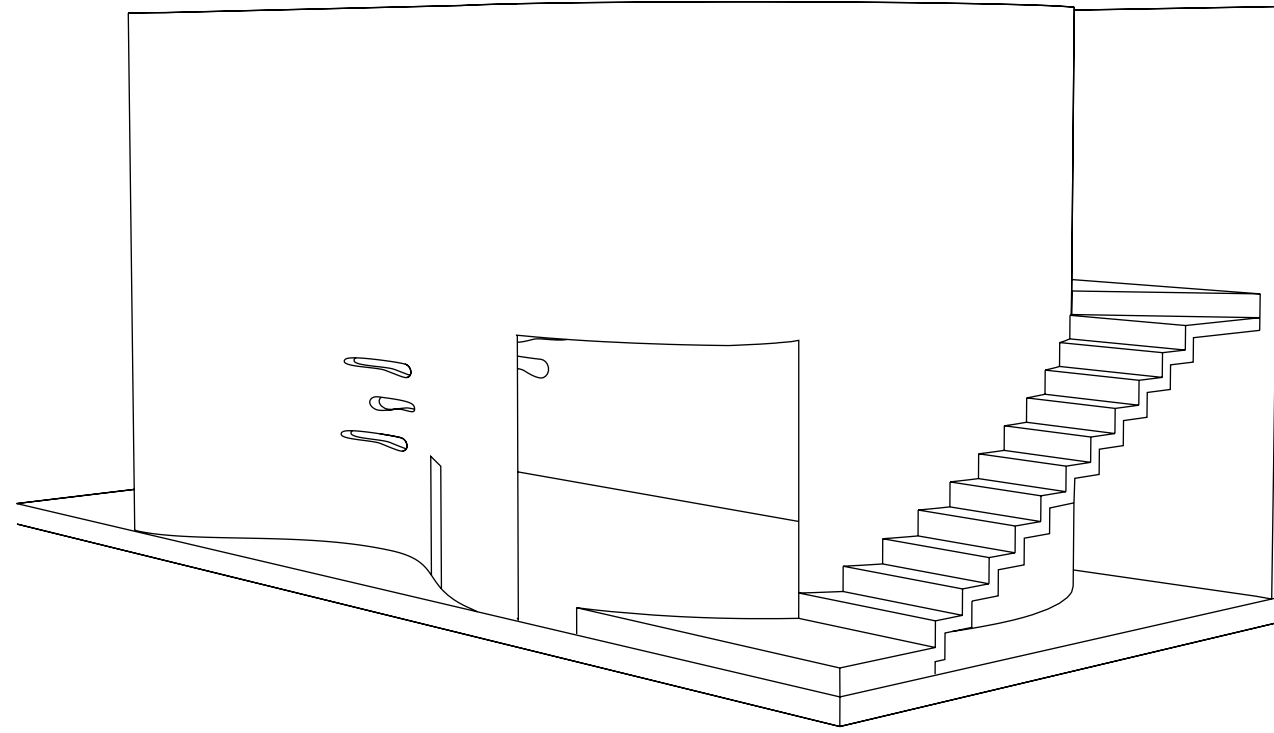
suspended elements 7.5 cm thick
(maximum thickness with hidden metal support structure
+plasterboard or covering material)

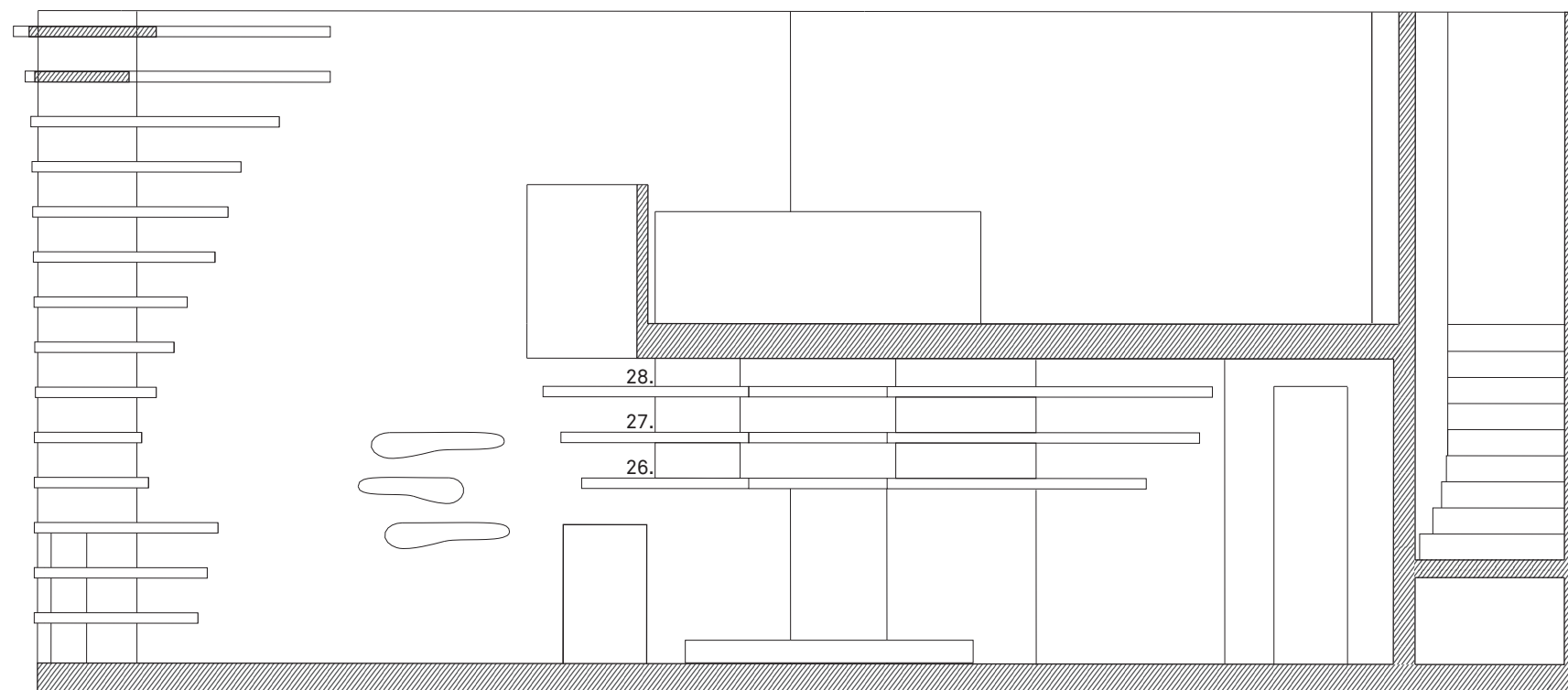
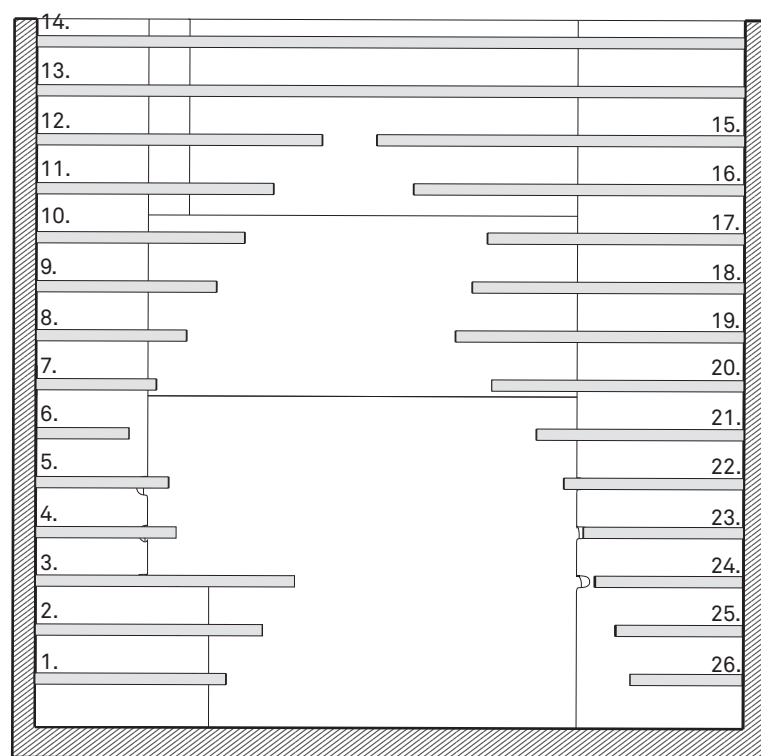


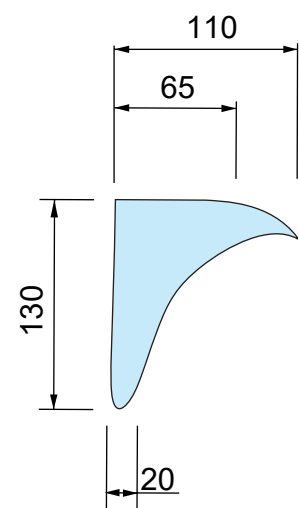


mezzanine floor detail
> structure of beams resting on load-bearing partitions

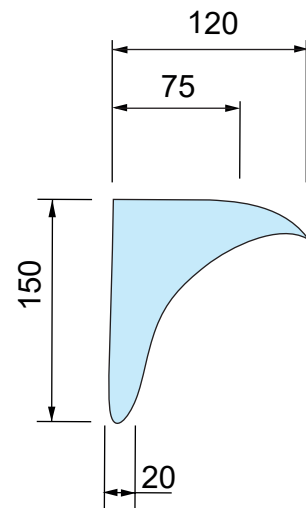




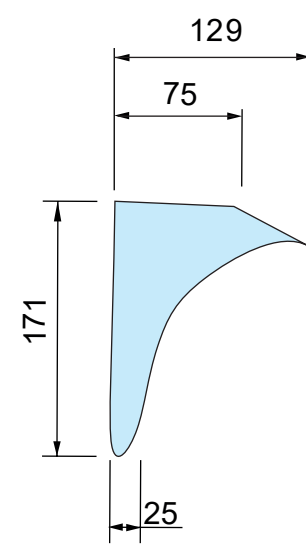




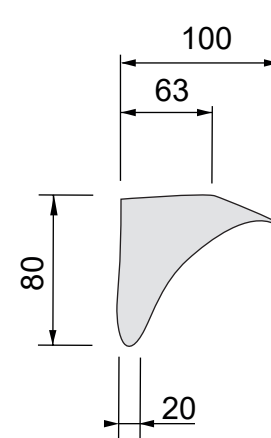
1.



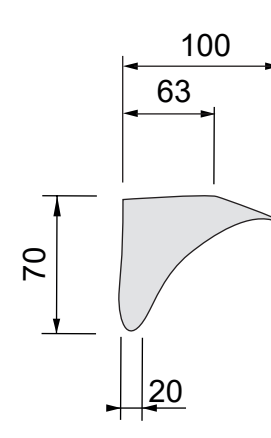
2.



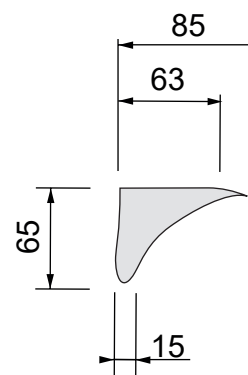
3.



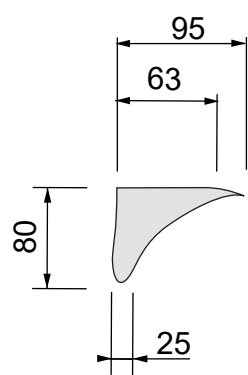
4.



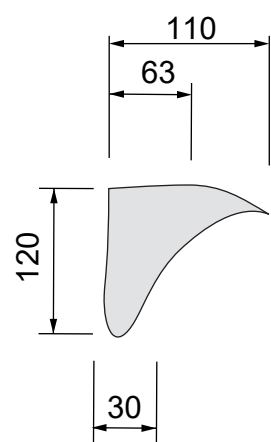
5.



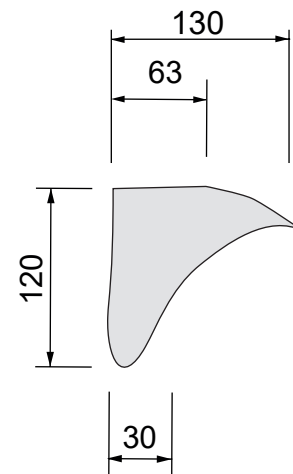
6.



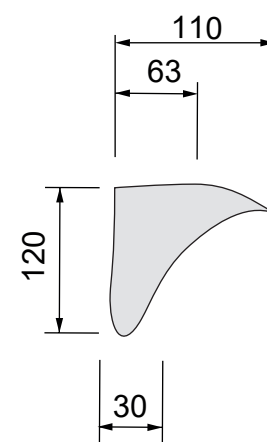
7.



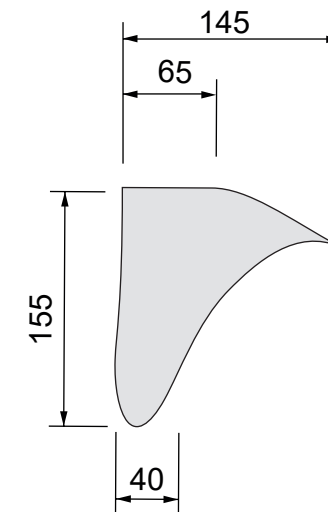
8.



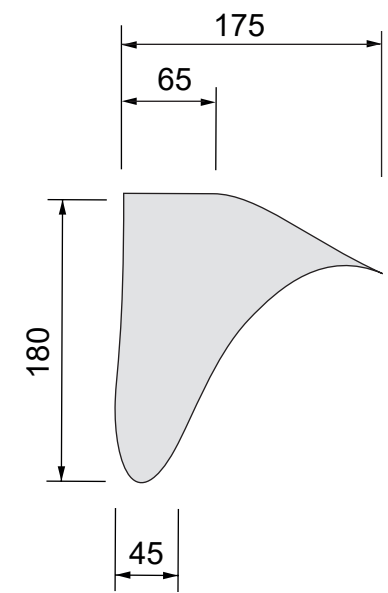
9.



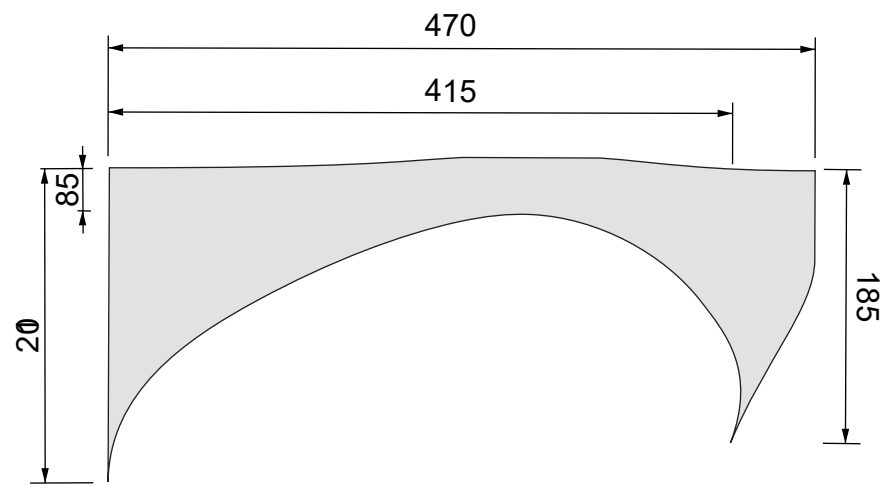
10.



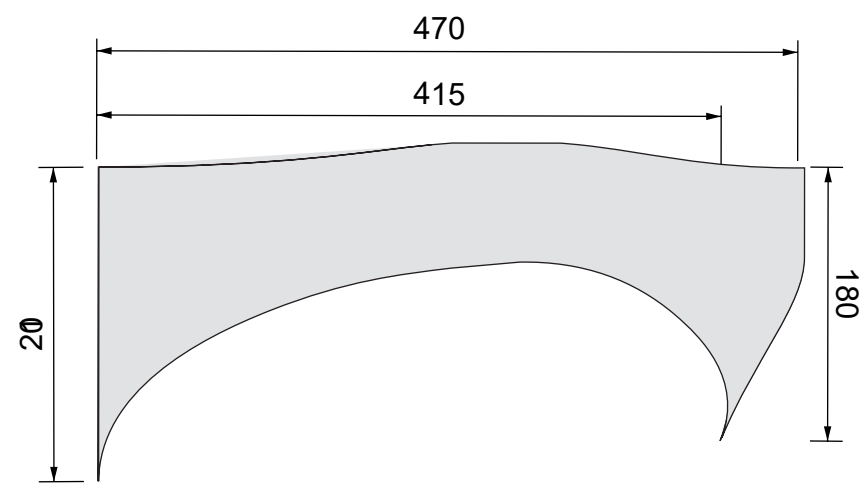
11.



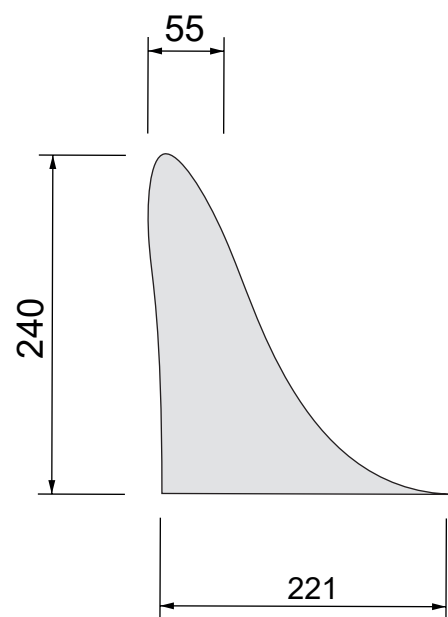
12.



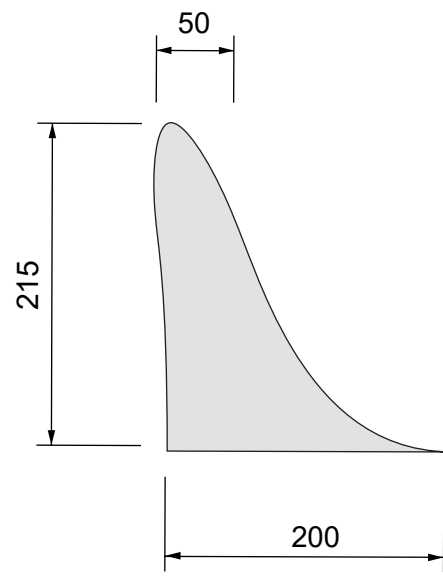
13.



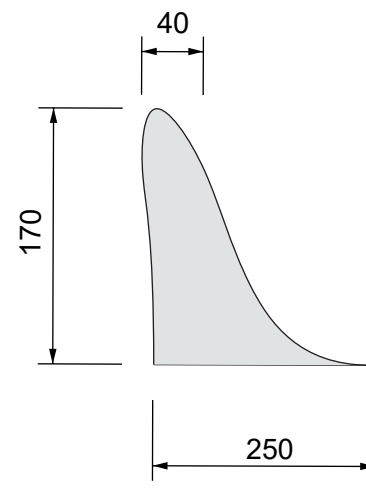
14.



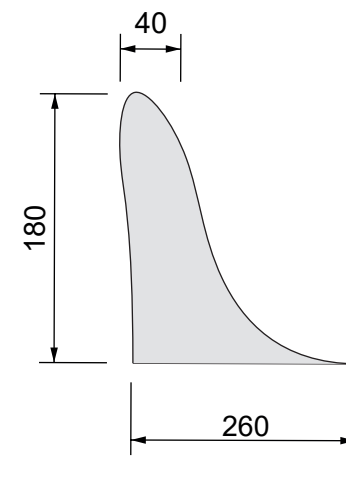
15.



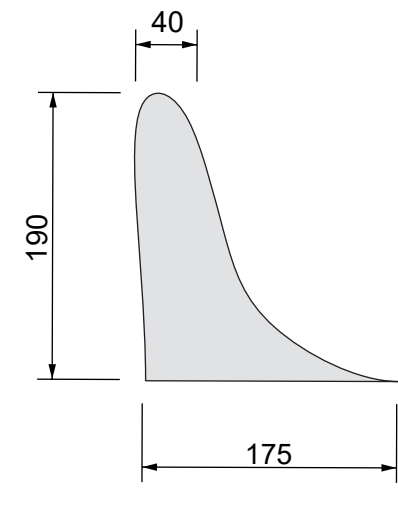
16.



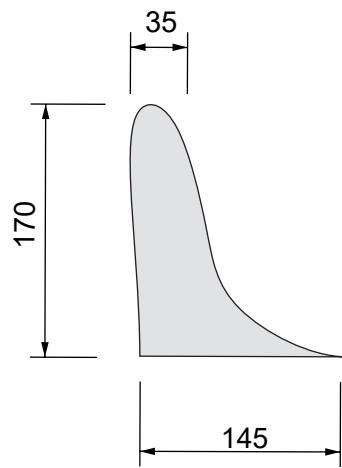
17.



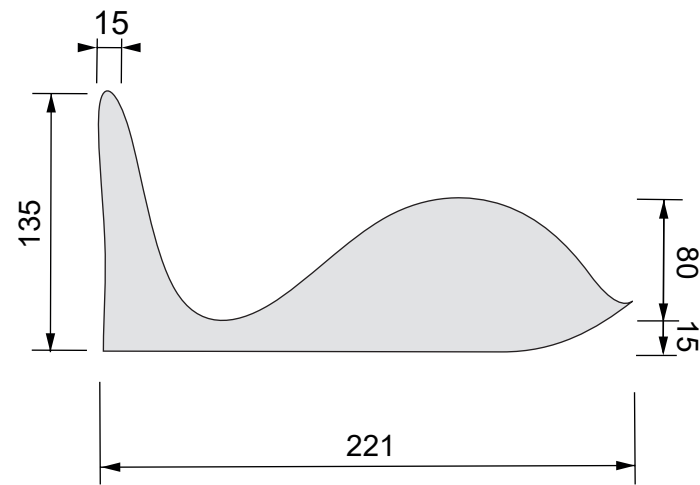
18.



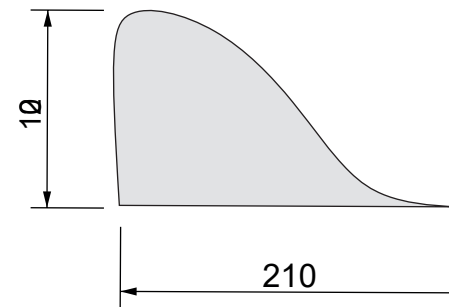
19.



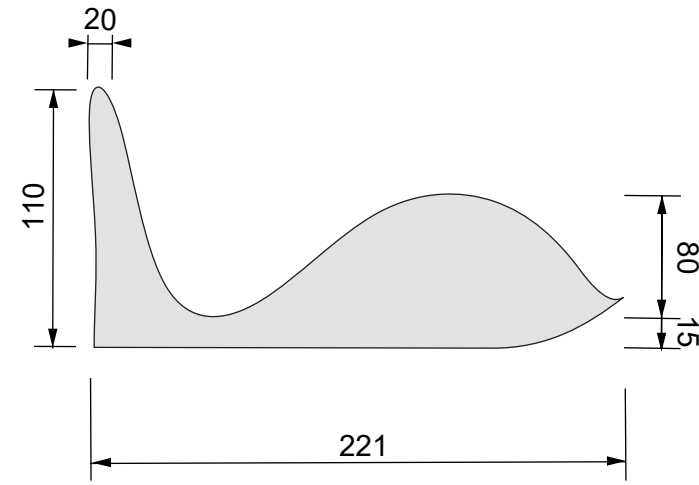
20.



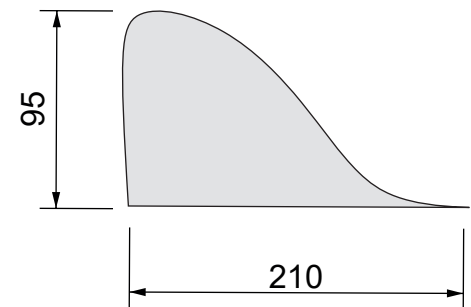
21.



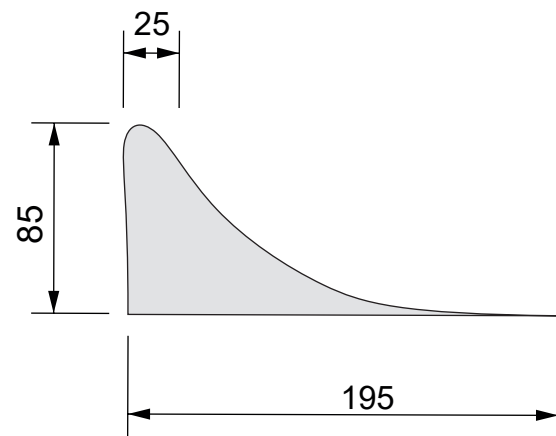
22.



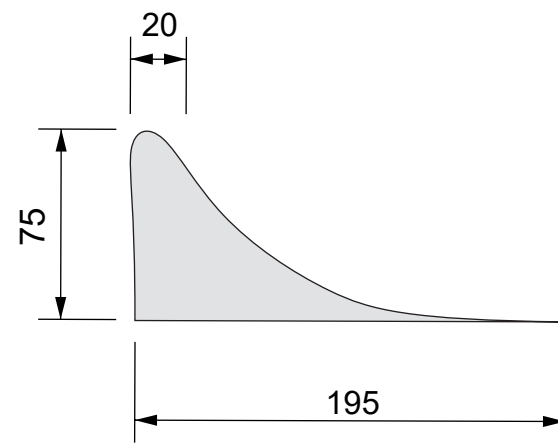
23.



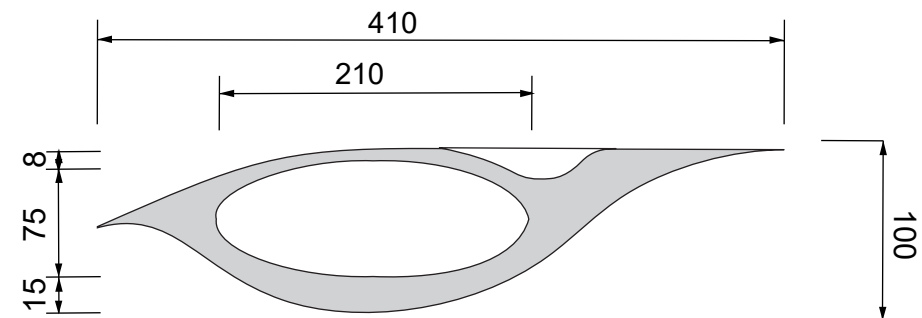
24.



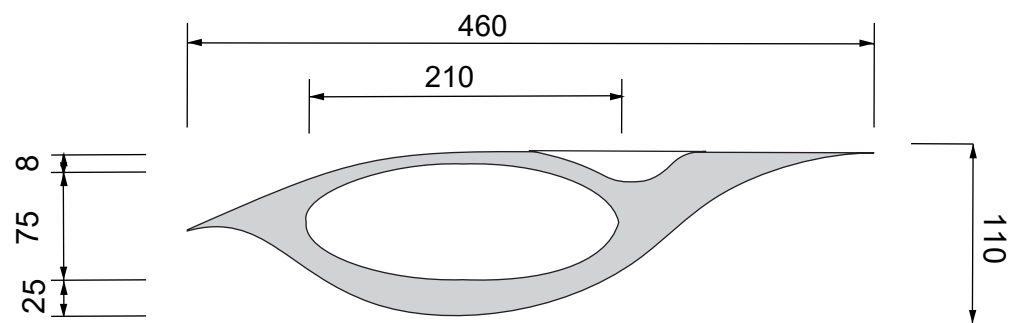
25.



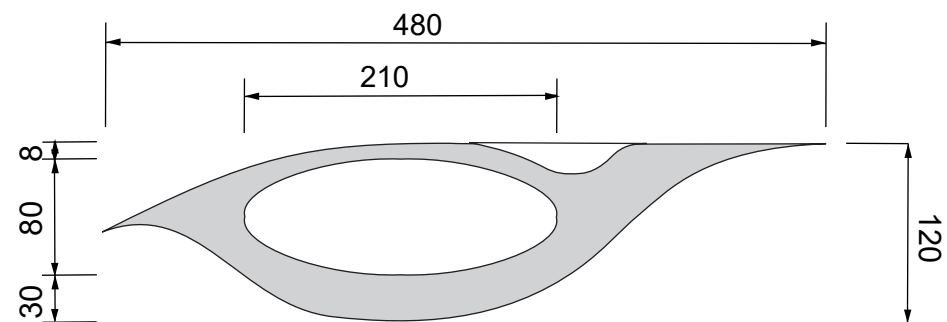
26.



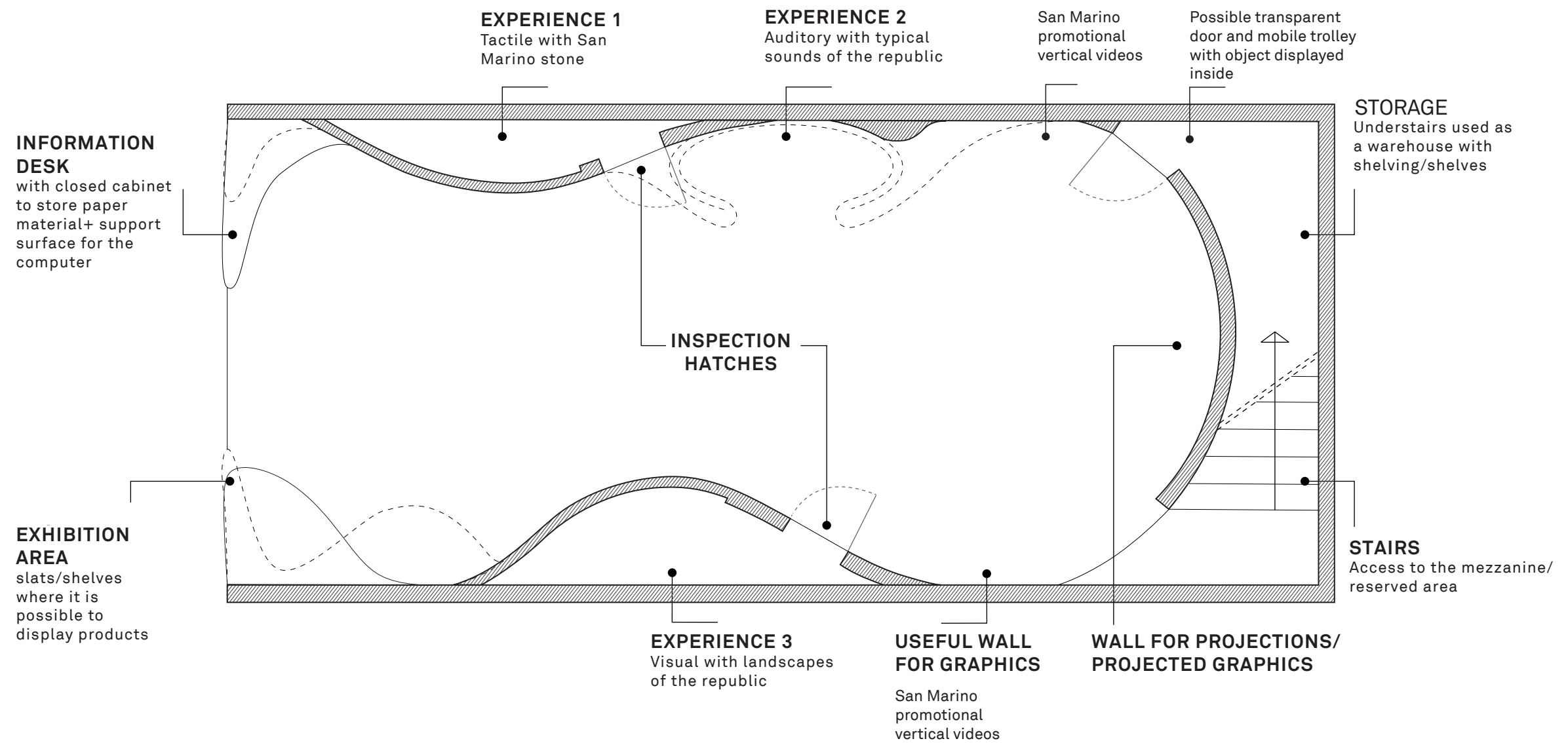
27.

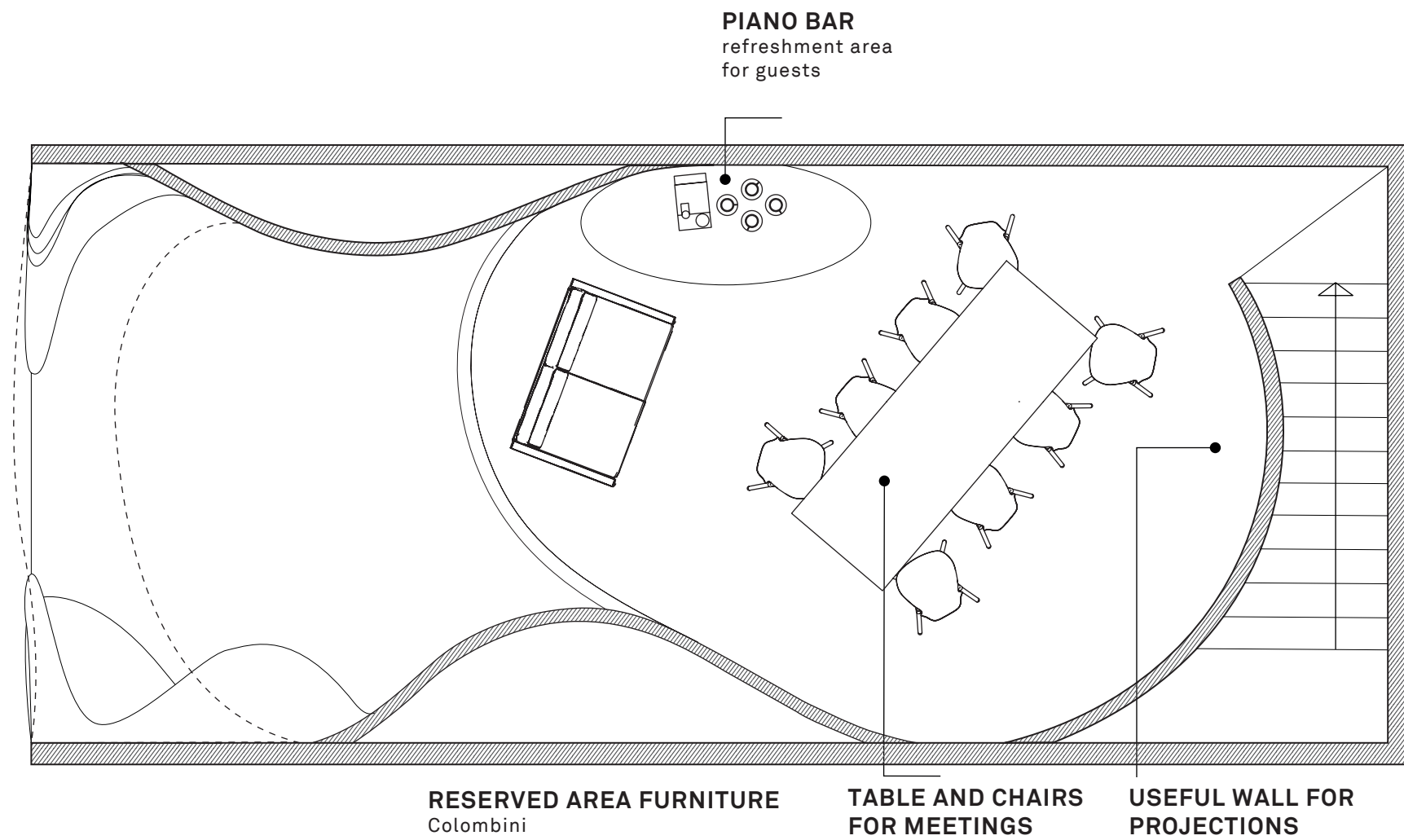


28.



29.







MOODBOARD

Textural effect

Soft light

- treated surfaces
 - >floor
 - >walls
 - >shelves
 - >ceiling
- color
 - >RAL
- lighting
 - >light effect
 - >temperature
 - light 4000K
 - (natural light)

#dfd8d2

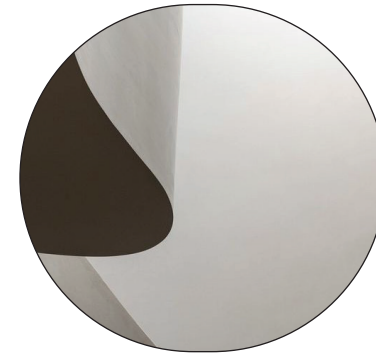
#9ca89e

#697c60

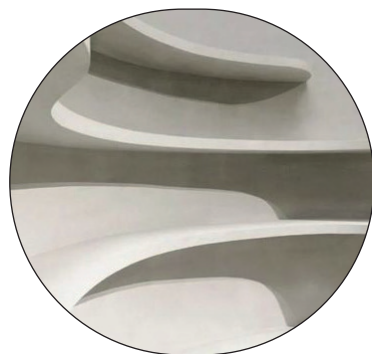
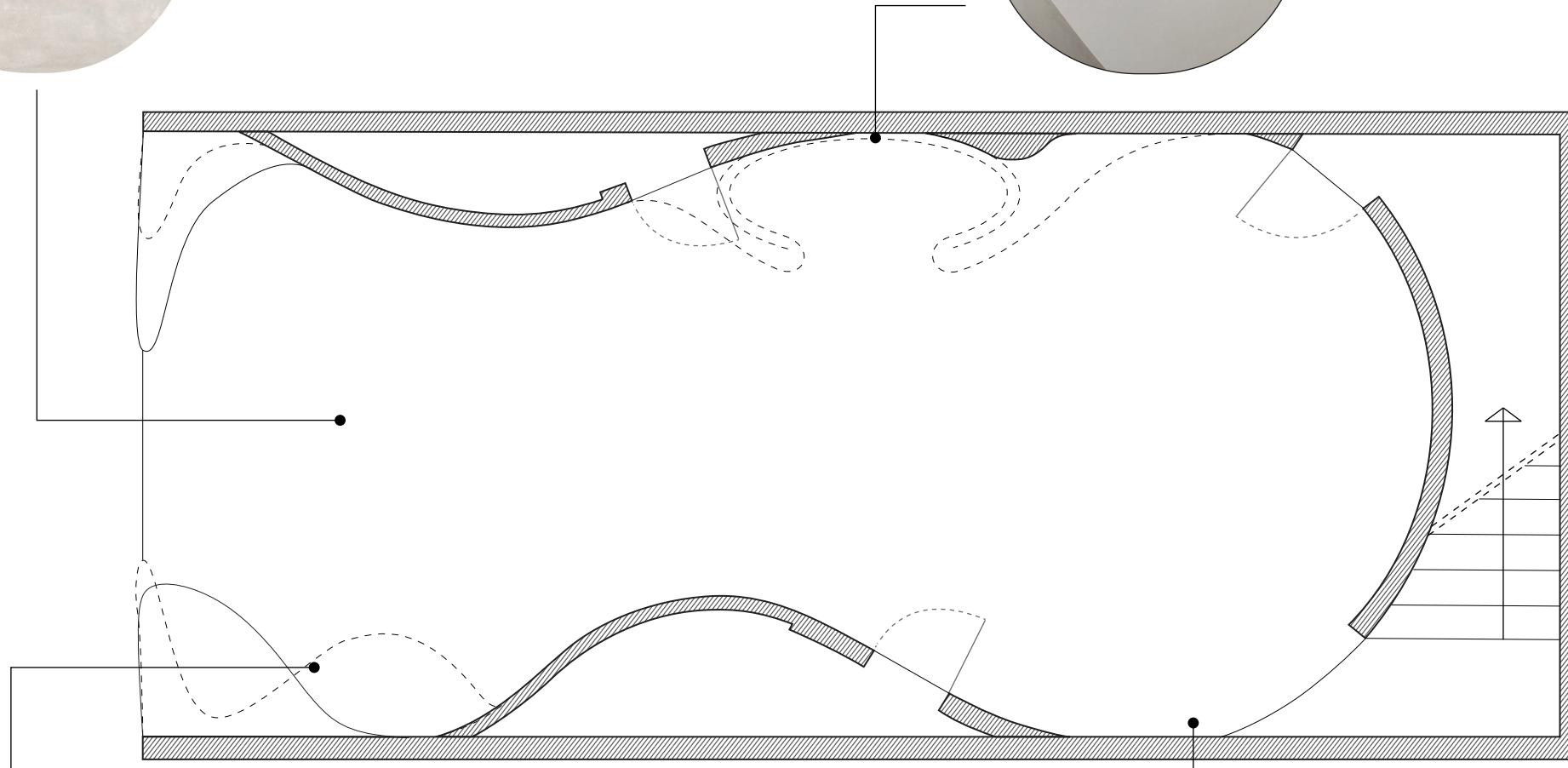
#517470



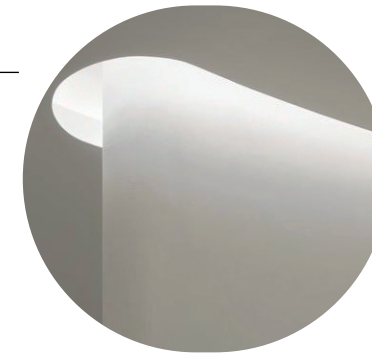
Color and texture
for all surfaces
color DFD8D2
Flooring: Linoleum
Walls: rough plaster finish



Soft light from above



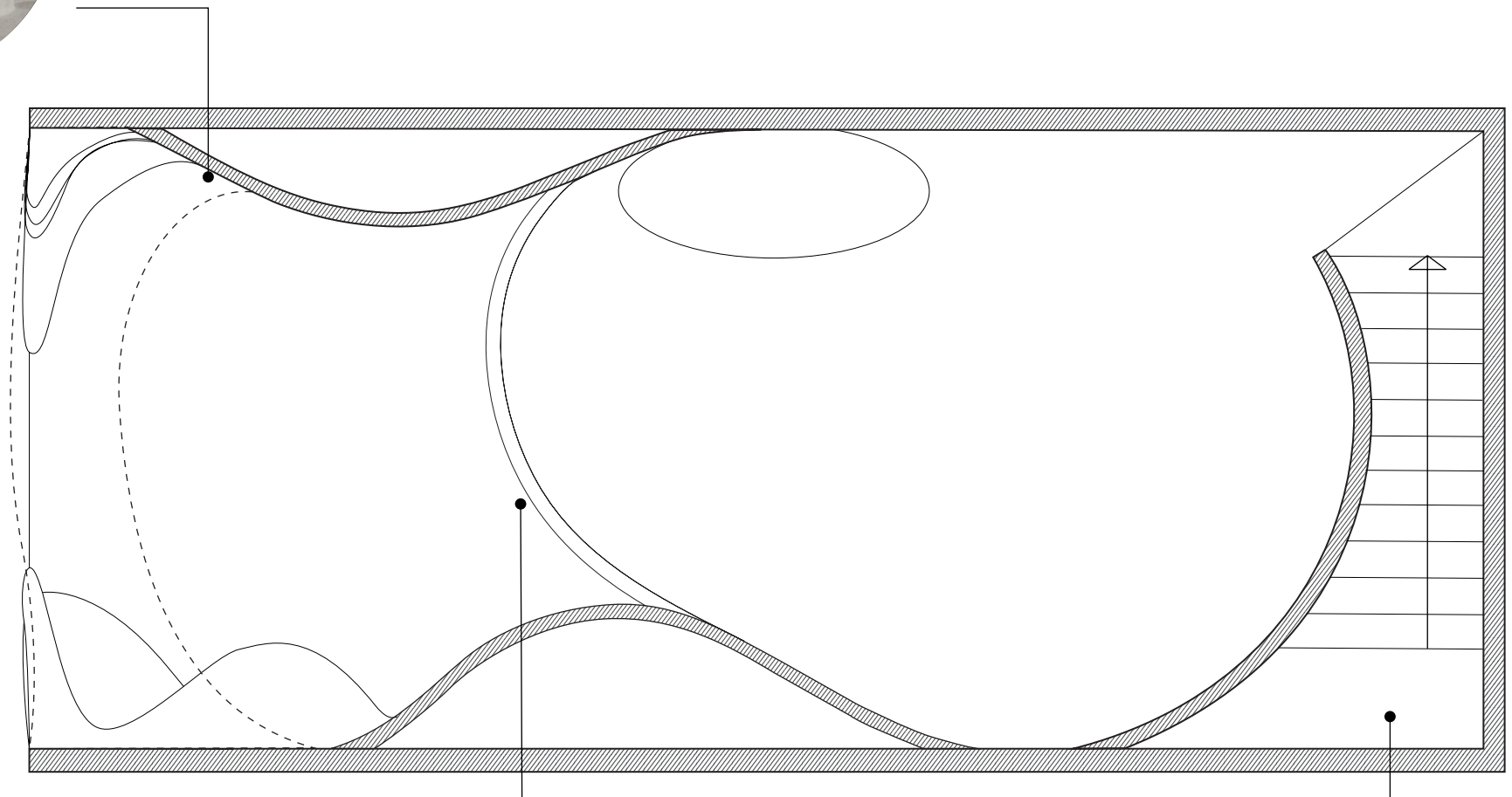
Suspension elements
7.5 cm thick
(maximum thickness with
hidden metal support structure
+ plasterboard or other covering
material)



Lighting under the mezzanine
LED strip with recessed shutter that
follows the shape of the walls
Light temperature 4000 K (natural light)



Ambient lighting
Strip LED that follows the shape of the walls
Temperature light 4000K (natural light)



Plasterboard balustrade

The part will be covered with a white
tripoli curtain to guarantee greater
privacy and to allow any projections

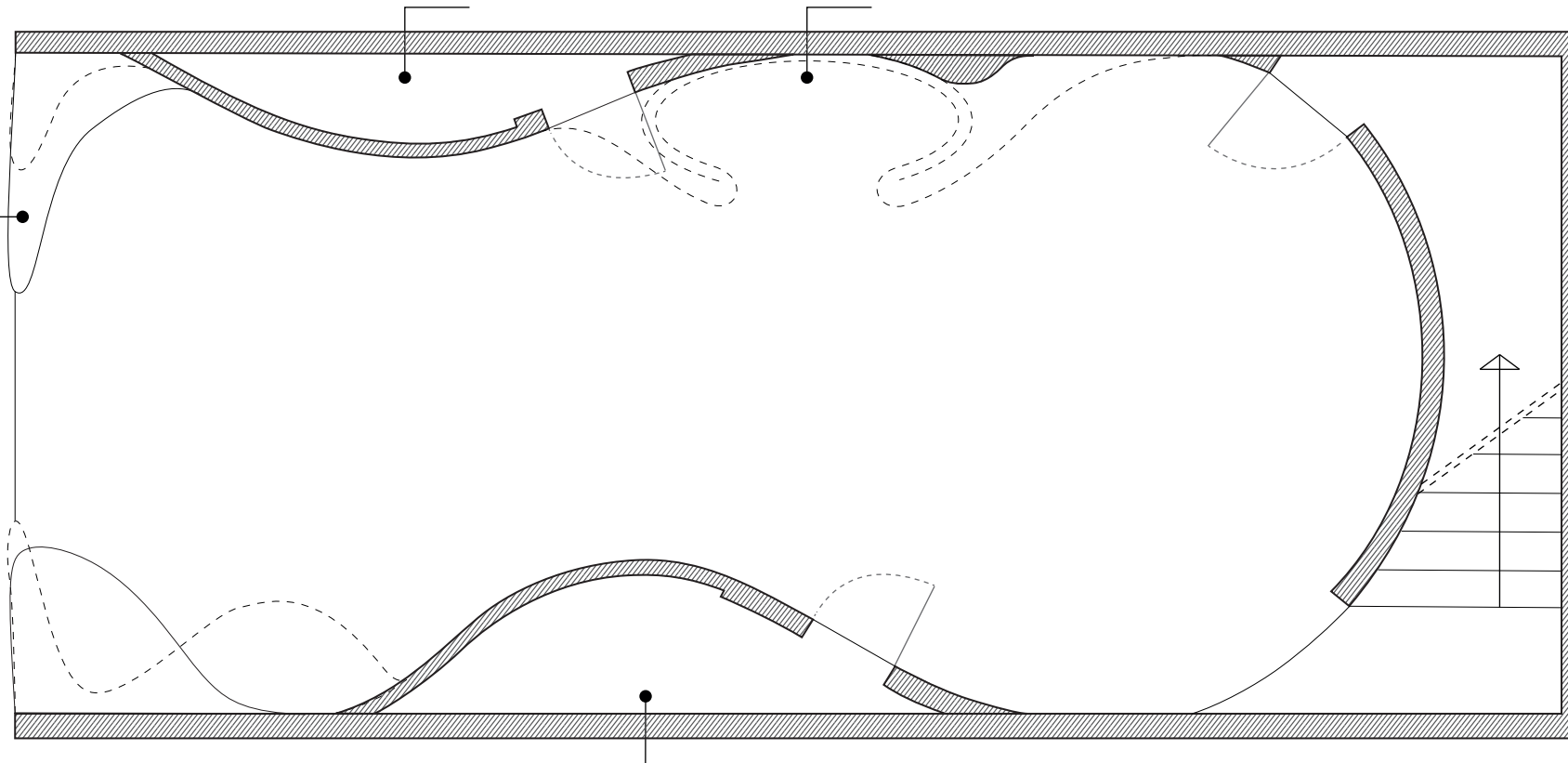


**INFORMATION
DESK**
with closed cabinet
to store paper
material+ support
surface for the
computer

EXPERIENCE 1
Tactile with San
Marino stone

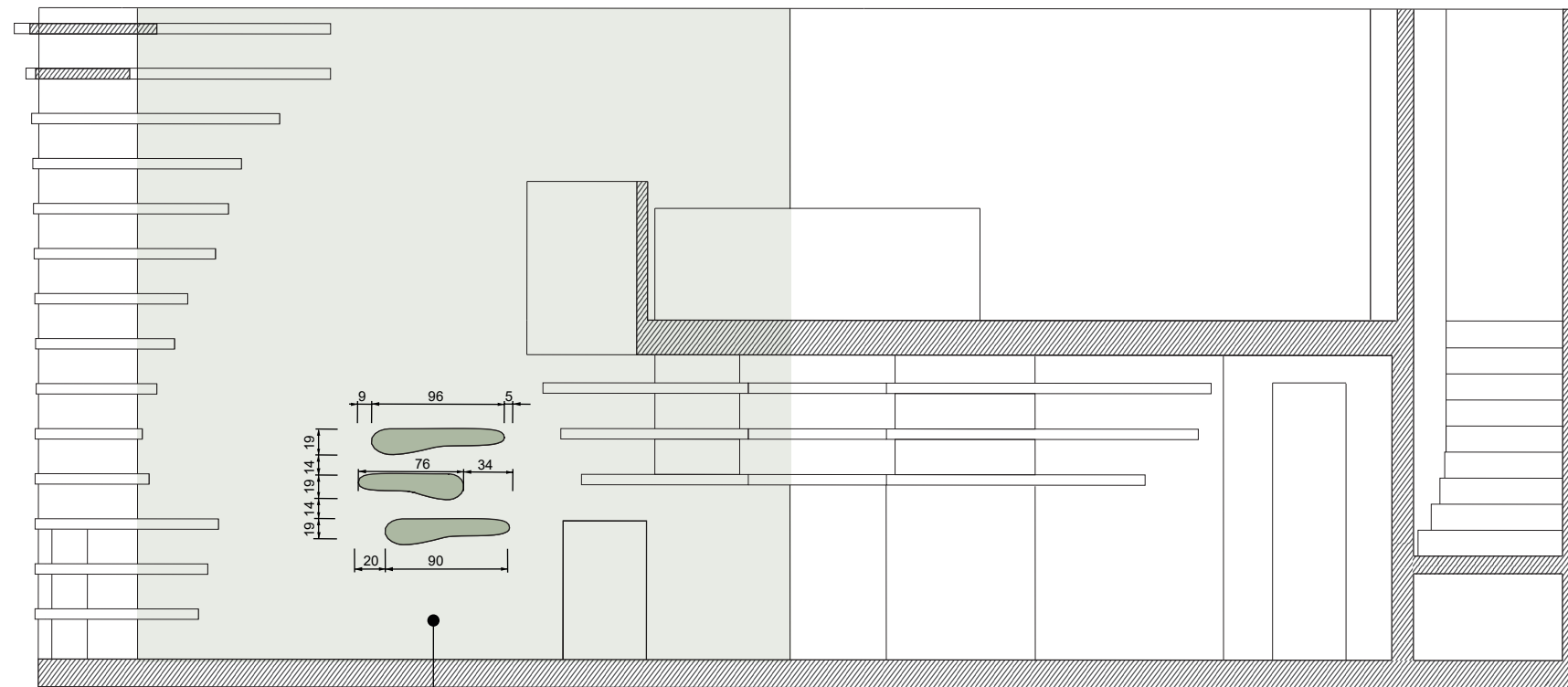
EXPERIENCE 2
Auditory with typical
sounds of the republic

EXPERIENCE 3
Visual with landscapes
of the republic

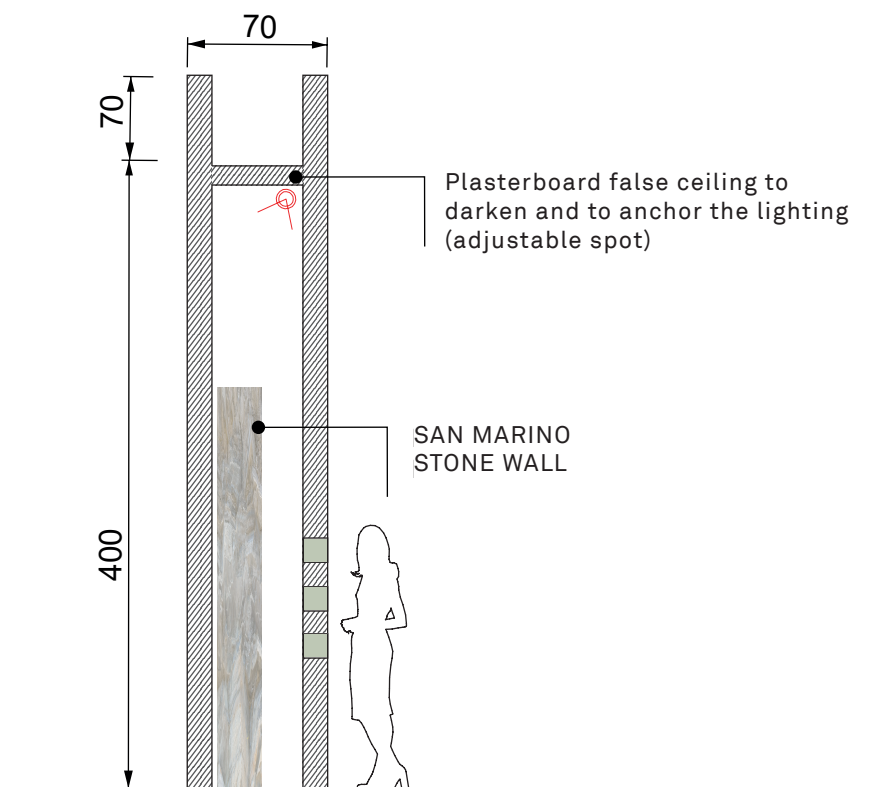


EXPERIENCE 1

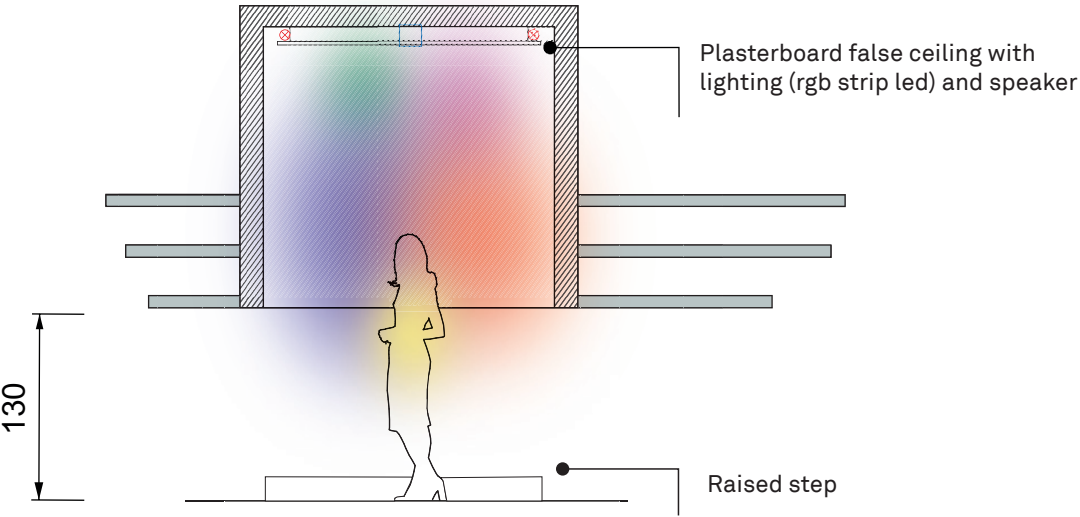
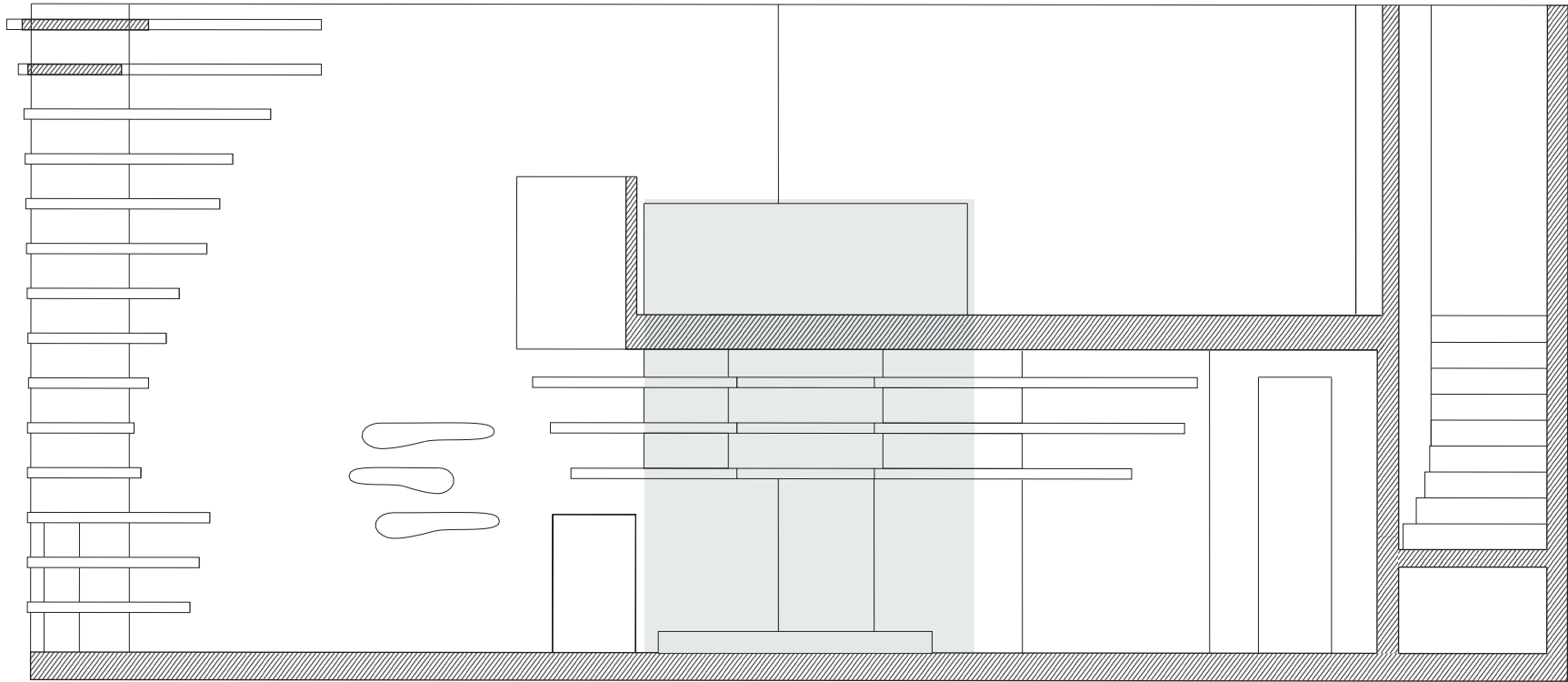
Tactile with San
Marino stone



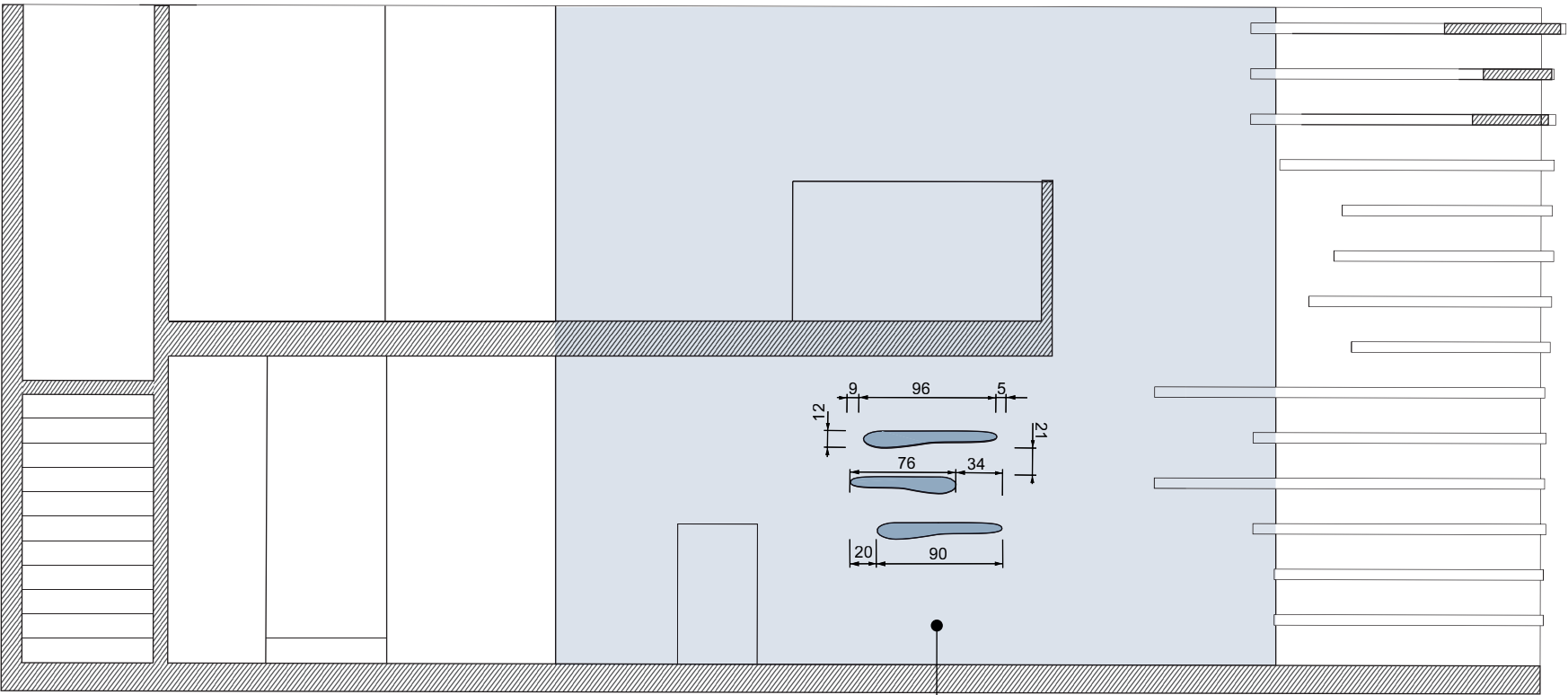
Three holes at different heights
that allow you to see and touch
the San Marino stone



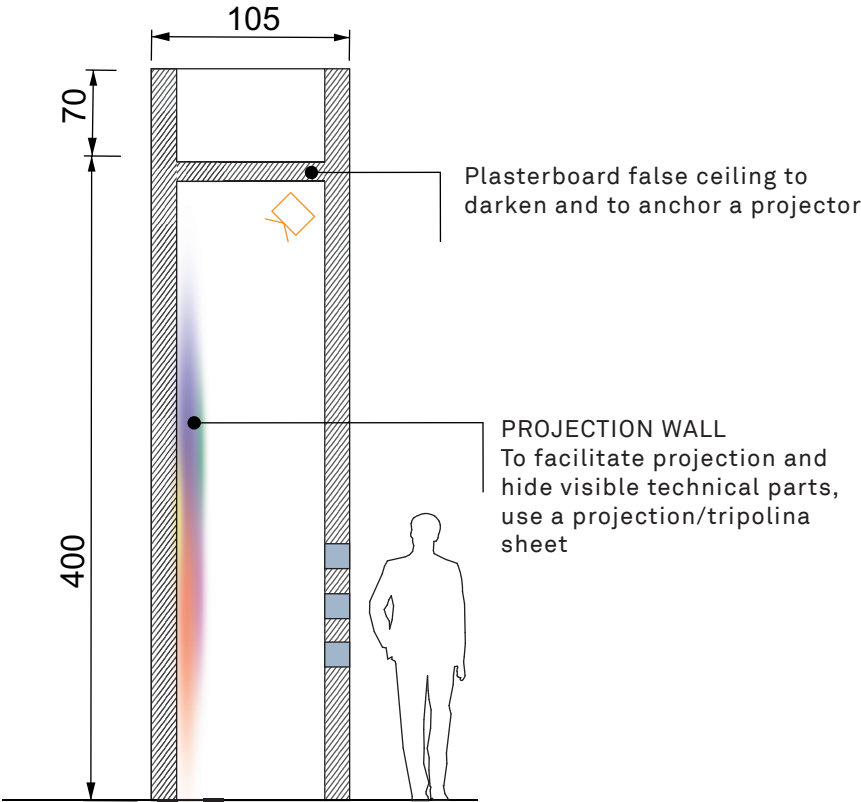
EXPERIENCE 2
Auditory with typical
sounds of the republic

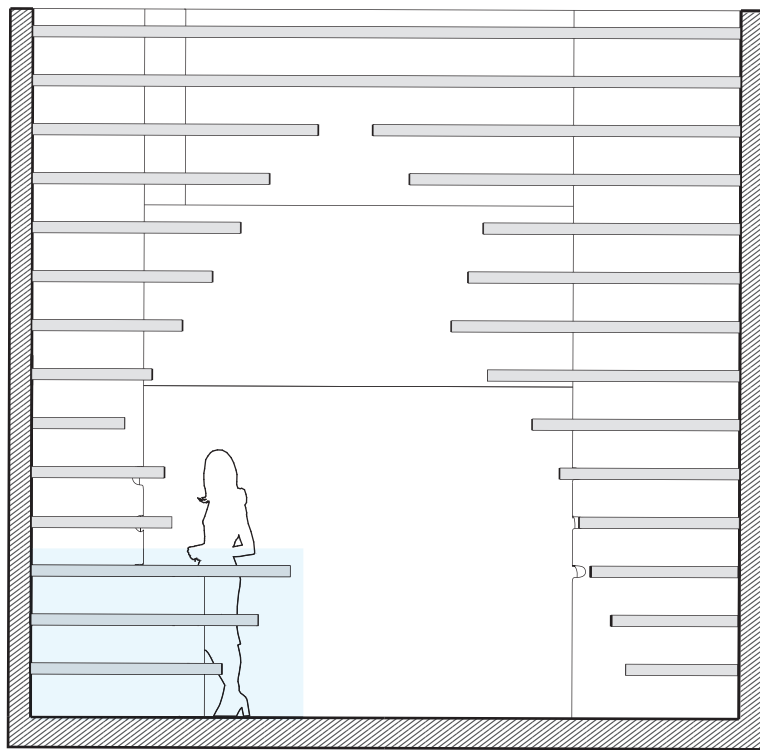


EXPERIENCE 3
Visual with landscapes
of the republic

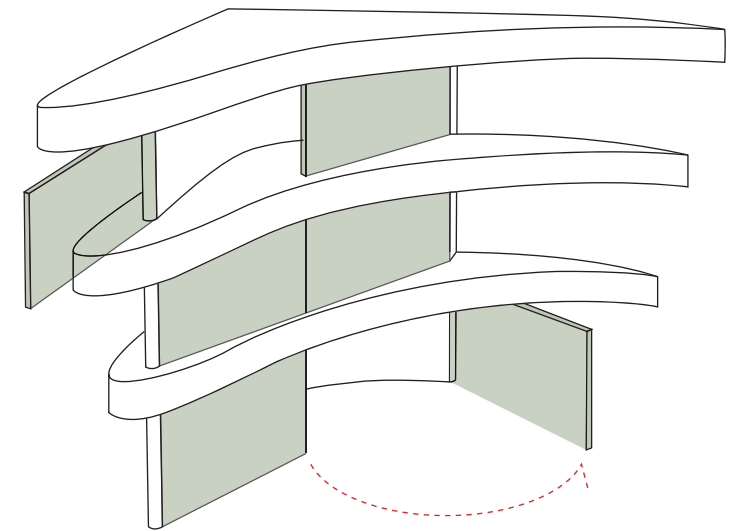
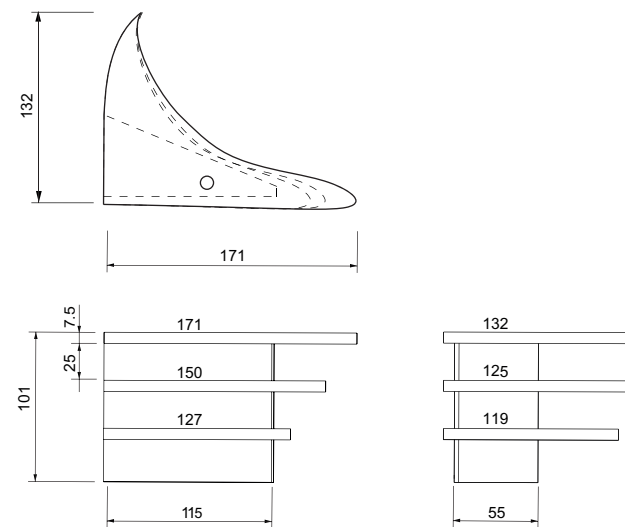


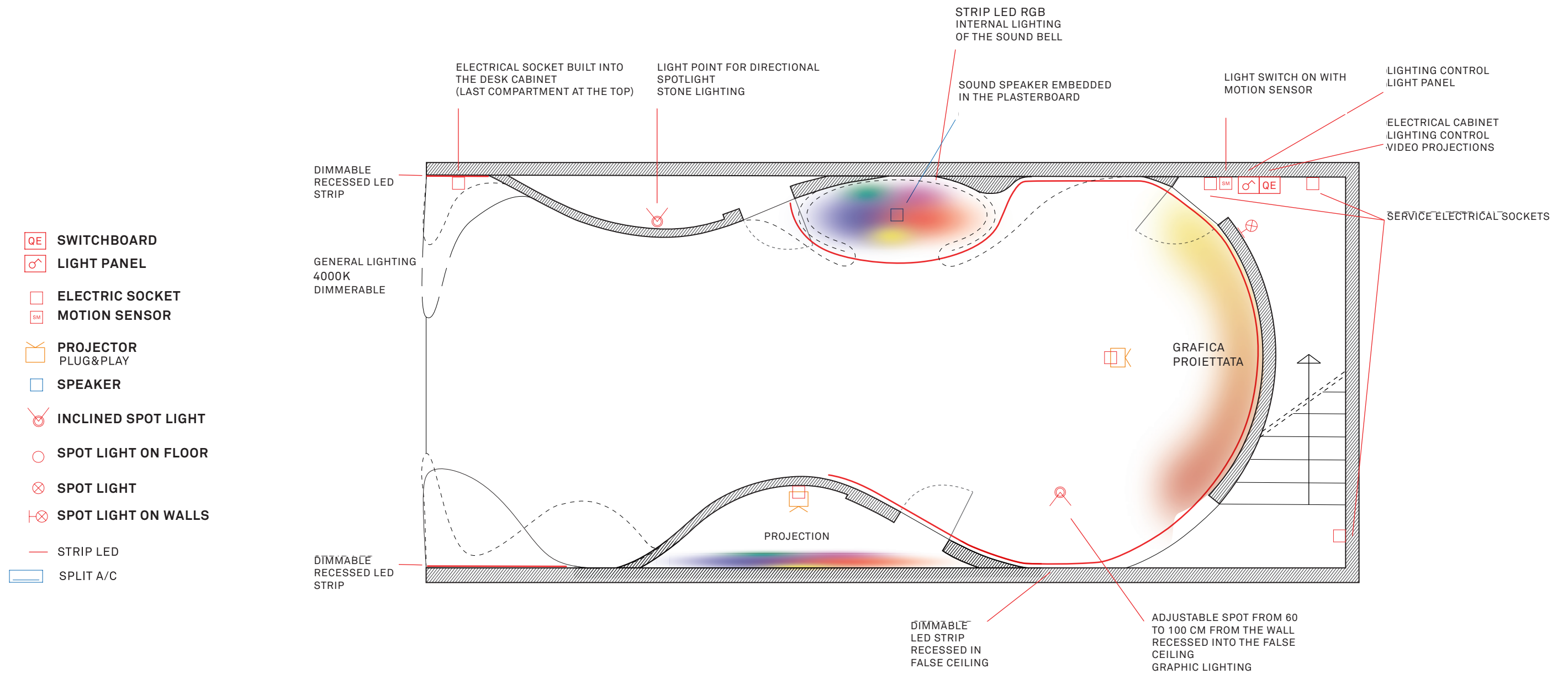
Three holes at different heights that allow you to see projections of the panorama of San Marino



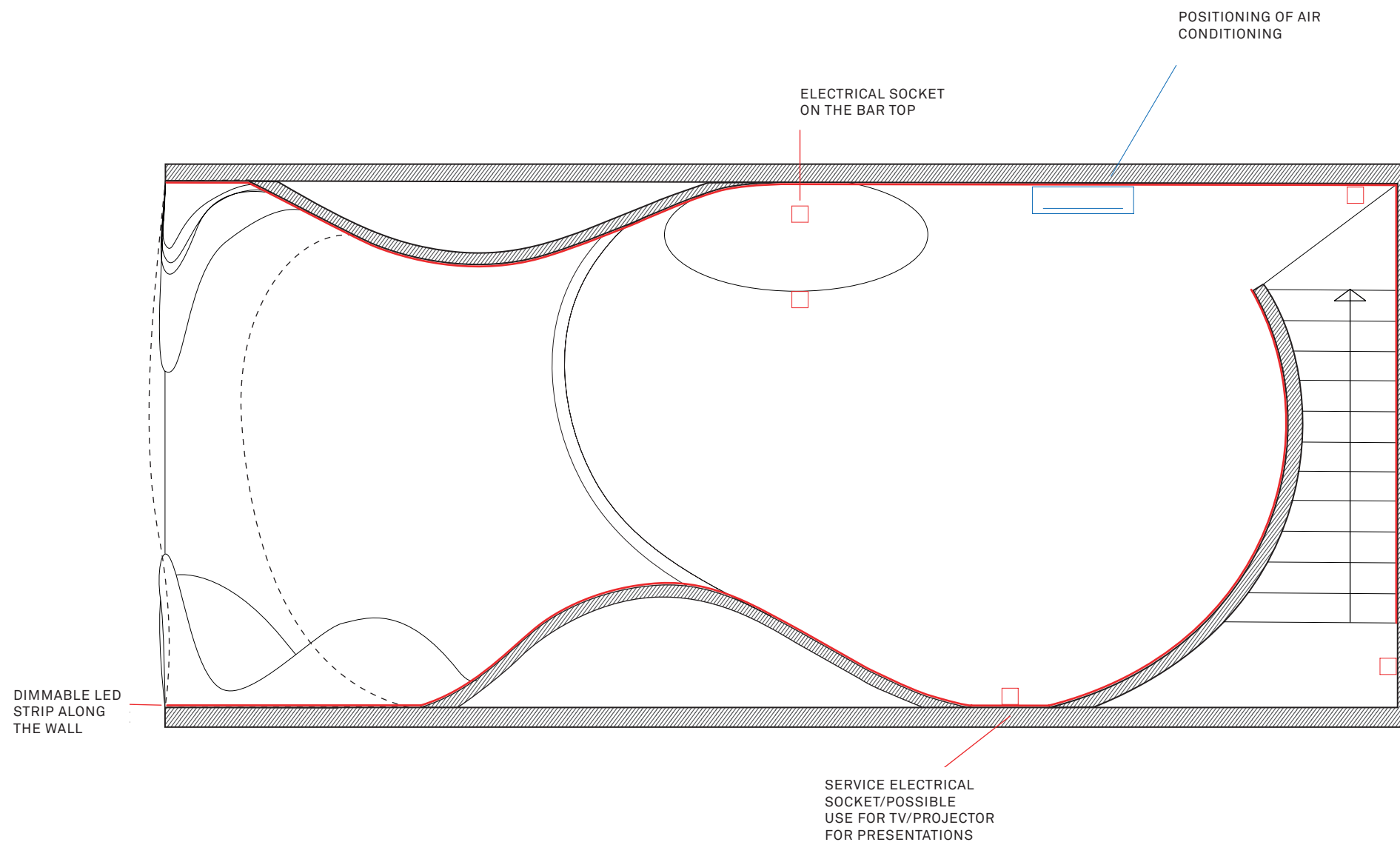


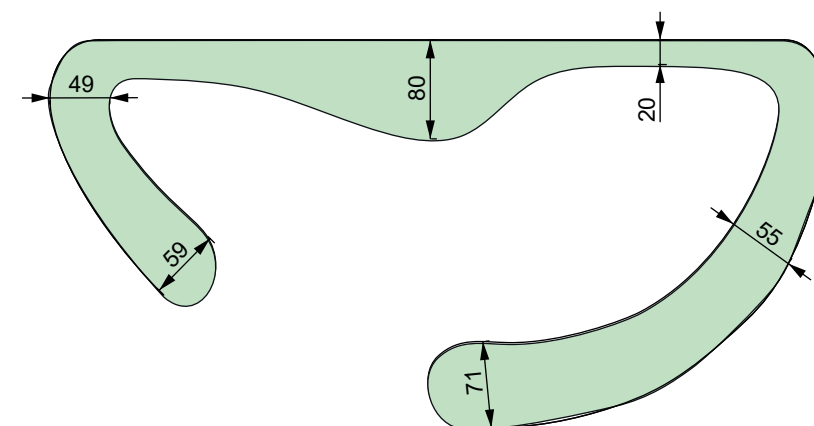
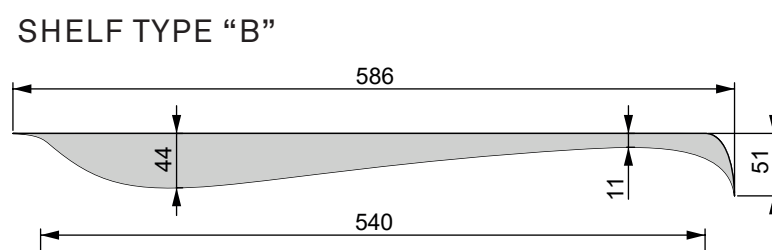
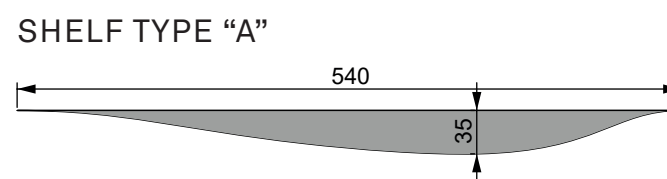
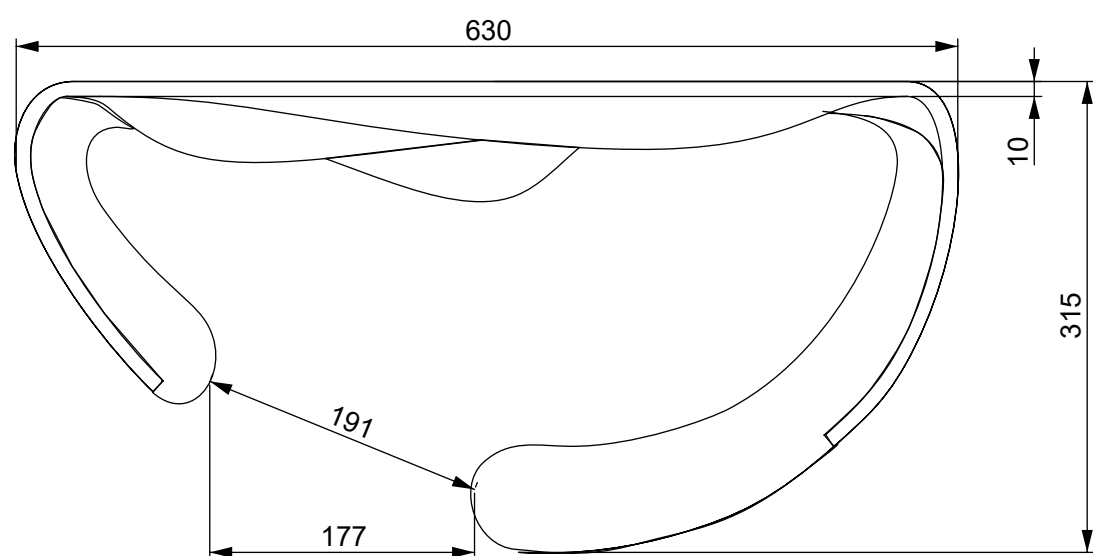
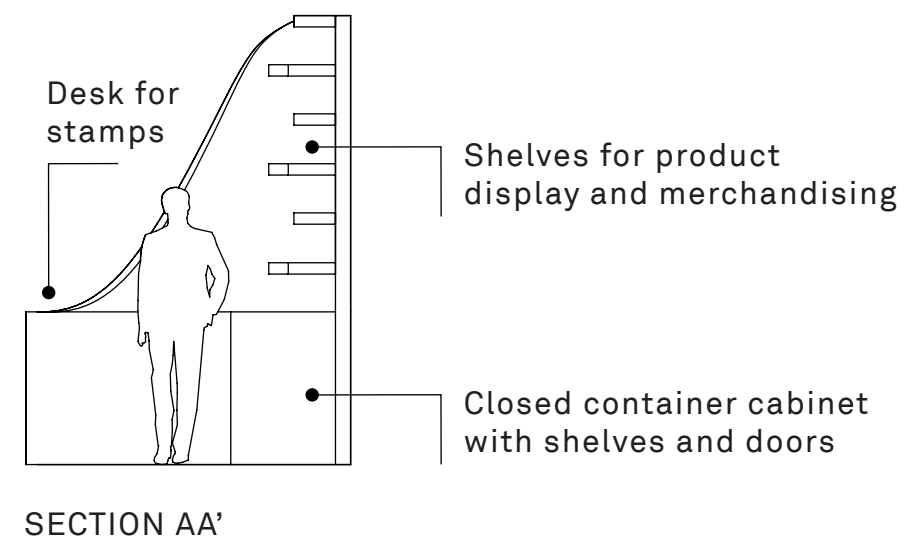
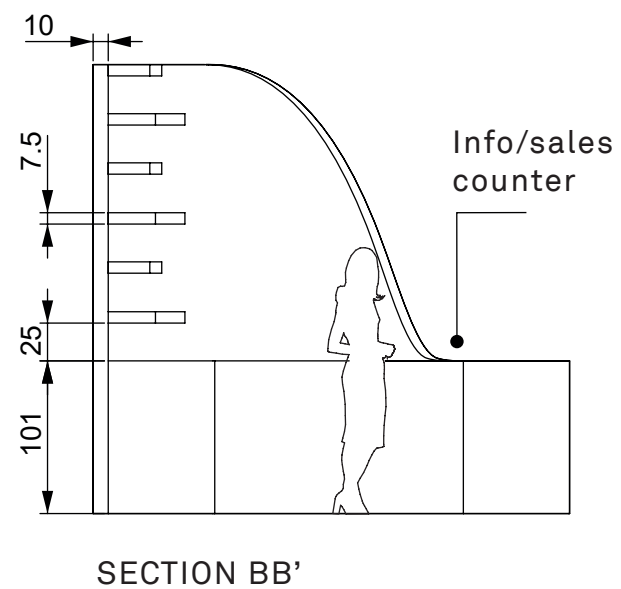
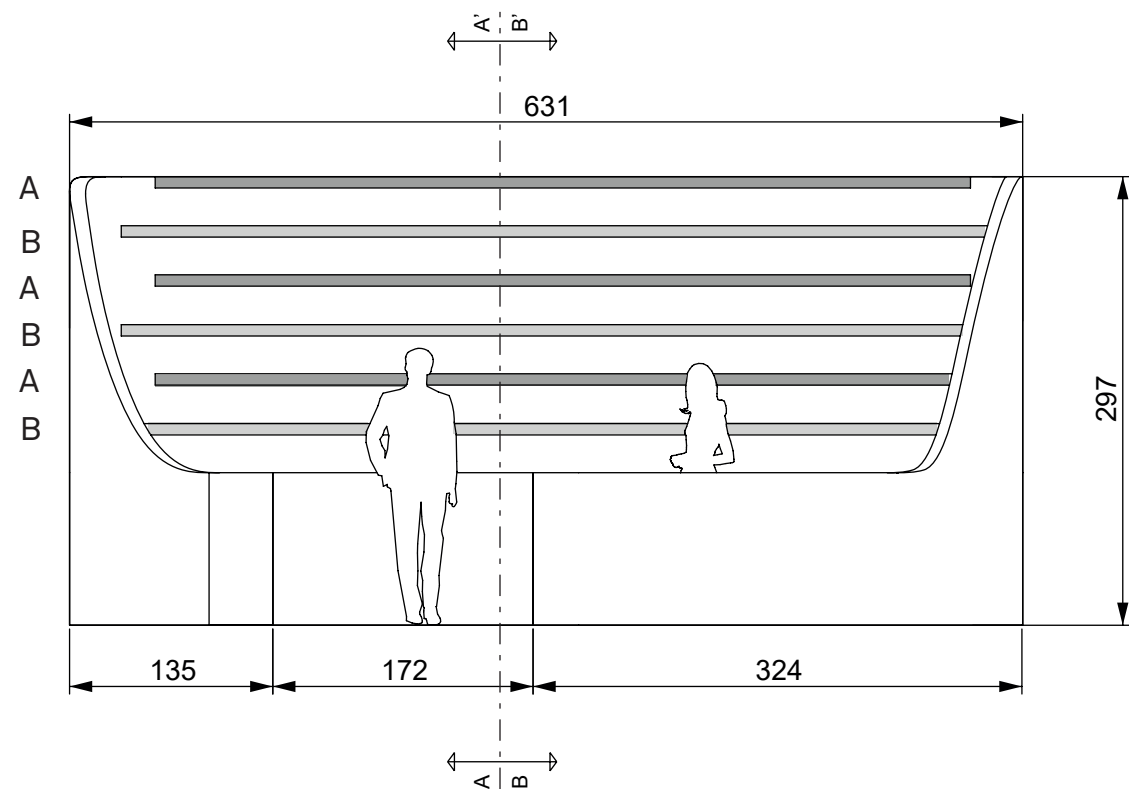
**INFORMATION
DESK**
with closed cabinet
to store paper
material
+ cable hole
+ support surface
for the computer

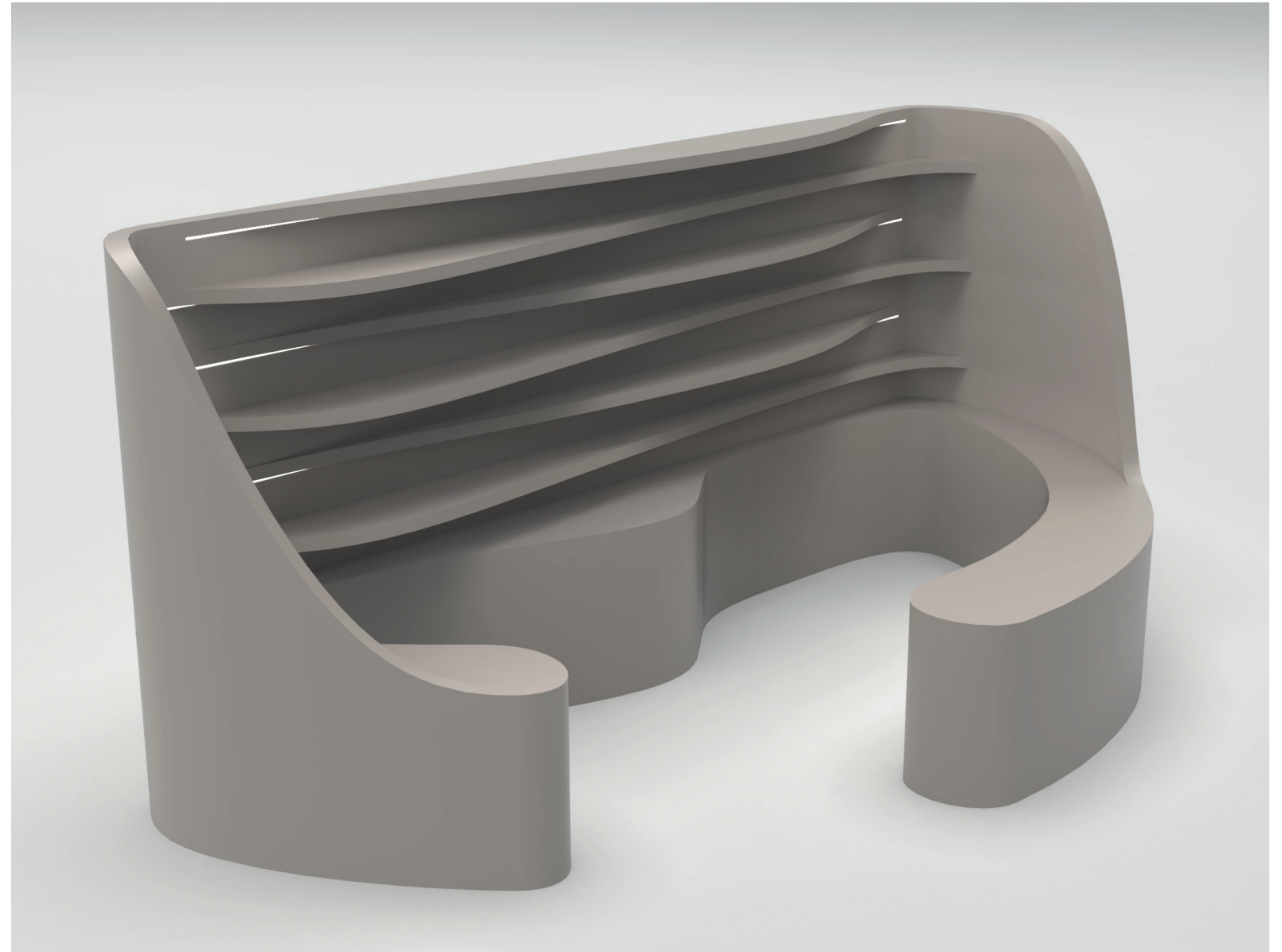
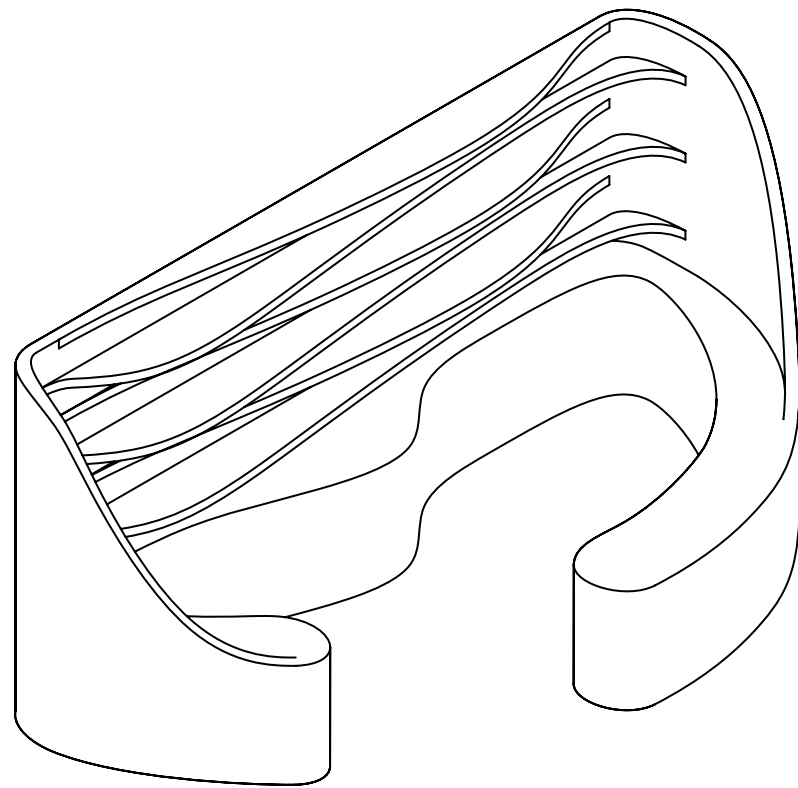


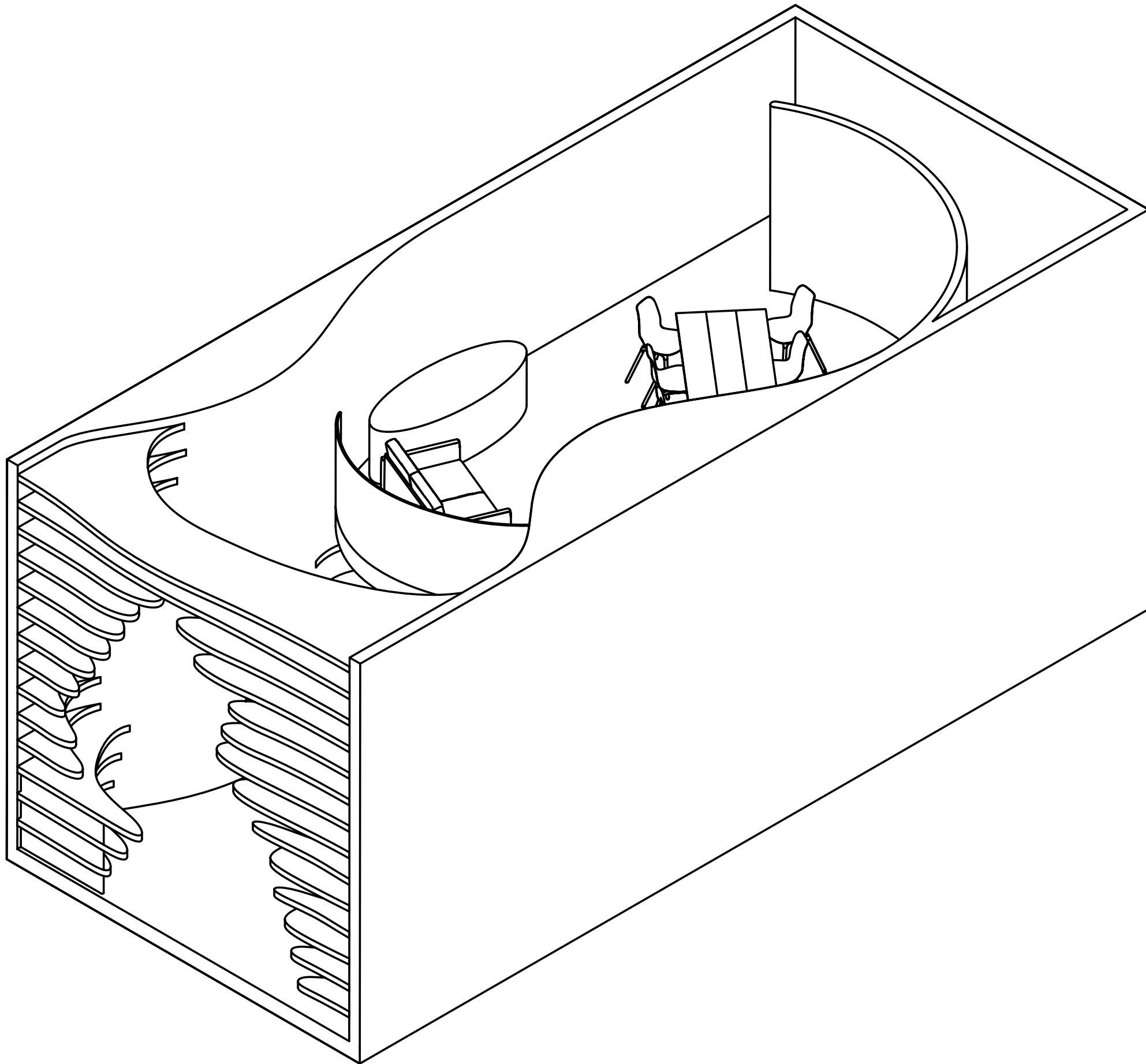


- QE SWITCHBOARD
- ⏻ LIGHT PANEL
- ELECTRIC SOCKET
- SM MOTION SENSOR
- ▶ PROJECTOR
PLUG&PLAY
- SPEAKER
- ⦿ INCLINED SPOT LIGHT
- SPOT LIGHT ON FLOOR
- ⊗ SPOT LIGHT
- ⊗ SPOT LIGHT ON WALLS
- STRIP LED
- ▭ SPLIT A/C









THE PAVILION

